

# ZEISS Multi Sensor CMMs for Car Body Applications



# **ZEISS Multi Sensor CMMs for Car Body Applications**

More than a Robot – The Hambot



# More than a Robot – The Hambot

## Trends in Carbody Metrology



Optical sensor for  
Carbody metrology

- Faster to the result.
- Surface information (CAD compare)
- Digital Twin
- Optical sensor on industrial robots

Multi Purpose CMMs

- Holistic Approach for measurement: More sensors in one automated Run.
- Increasing Flexibility: the application decides about the sensor.
- More Metrology in production environment.
- Reduction of logistics and transportation costs.

New applications due to  
Electric Mobility

- Short cycle times
- Tight tolerances
- Critical surfaces (machined aluminum)
- Access to the part

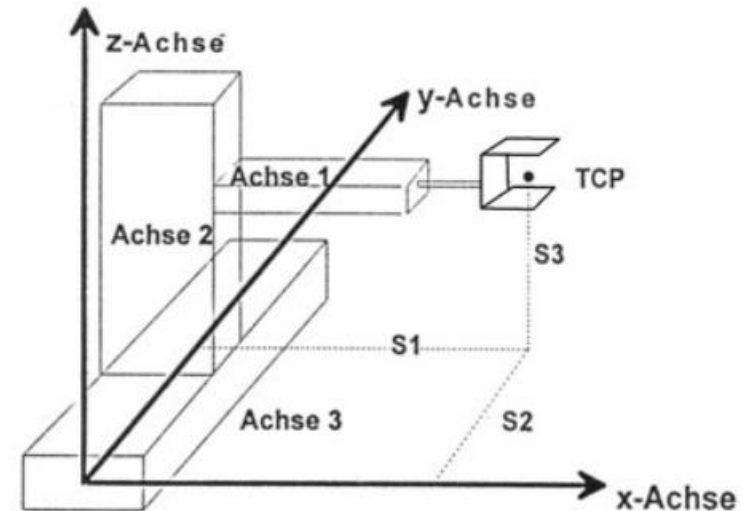
# More than a Robot – The Hambot

## Definition Industrial Robot

**Industrial robots are defined by ISO 8373:2012:**  
An automatically controlled, reprogrammable, multipurpose manipulator programmable in three or more axes, which can be either fixed in place or mobile for use in industrial automation applications

Classification by mechanical structure

- **Linear robots (including cartesian and gantry robots)**
- SCARA robots - Articulated robots
- Parallel robots (delta)
- Cylindrical robots
- Others

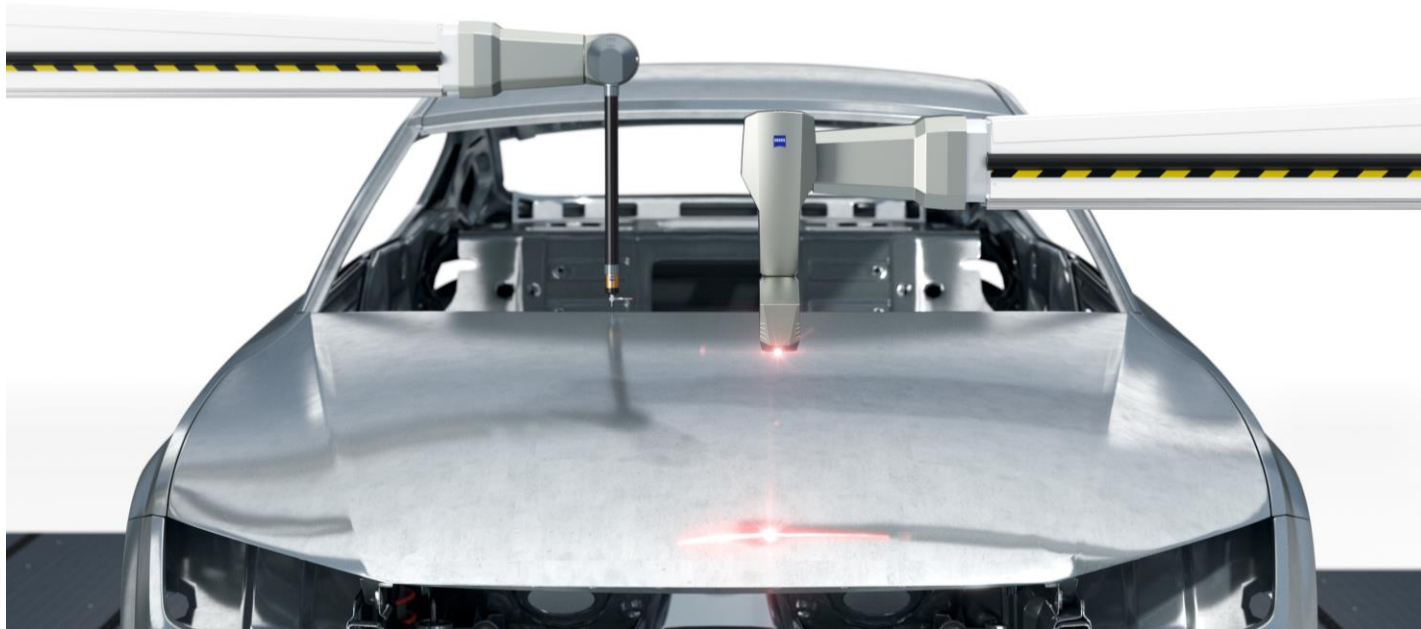


- Horizontal arm CMMs, especially combined with optical sensors are automatically controlled, programmable in more than 3 axis and are therefore robots based on ISO 8373:2012

# More than a Robot. The Hambot.

# More than a Robot – The Hambot

## ZEISS CALENO – More than a Robot



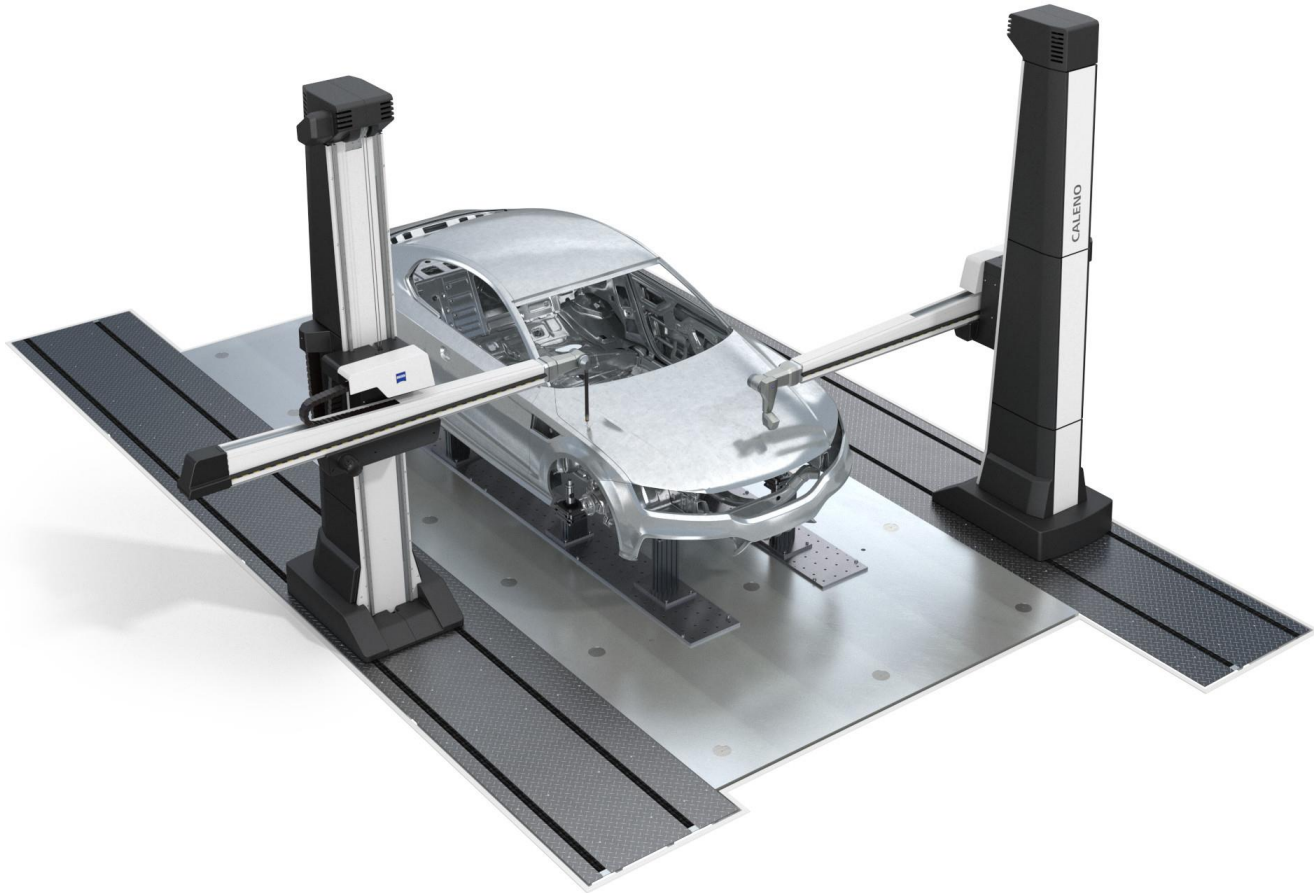
- CALENO is a cartesian 6-axis robot
- CALENO is a robot with an outstanding optical sensor system – EagleEye
- With CALENO you get proven CMM accuracy, a collaborative system and a multi sensor system with automatic sensor change.

This is not possible with an articulating robot.

**Therefore, CALENO is more than a robot.**

# More than a Robot – The Hambot

## ZEISS CALENO – The Hambot



- The new wording Hambot combines two different needs in metrology
  - The experience with **HAM**, that it is ideal for sheet metal metrology and provides high and absolute accurate measurements
  - The requirement for high productivity, which is linked with the wording **robot**
- **Hambot** will be used instead of Horizontal Arm Machine to underline the new class of CMMs with optical sensors.

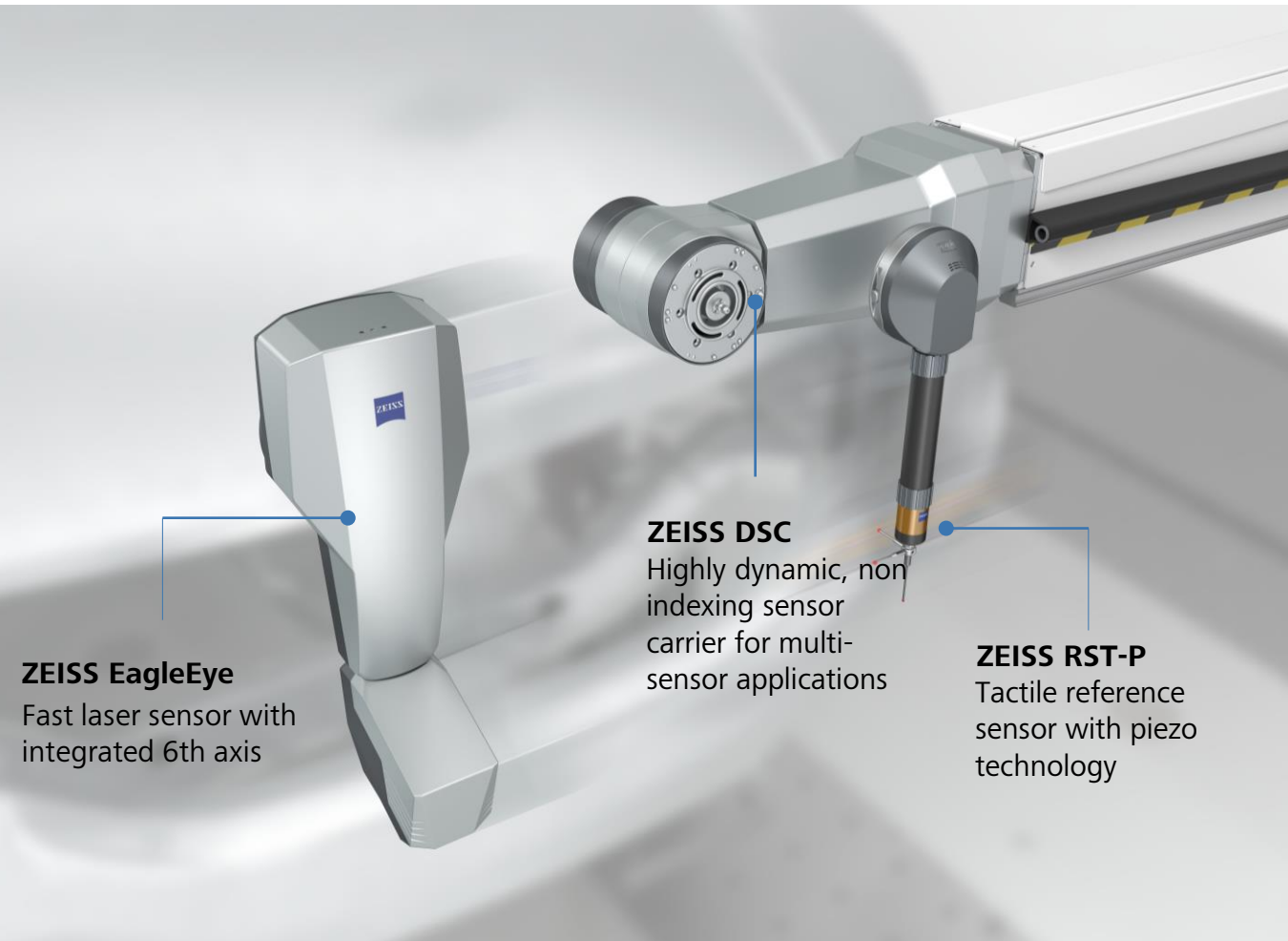
# **ZEISS Multi Sensor CMMs for Car Body Applications**

## The Hambot - Overview





# More than a Robot – The Hambot Multi-Sensor System

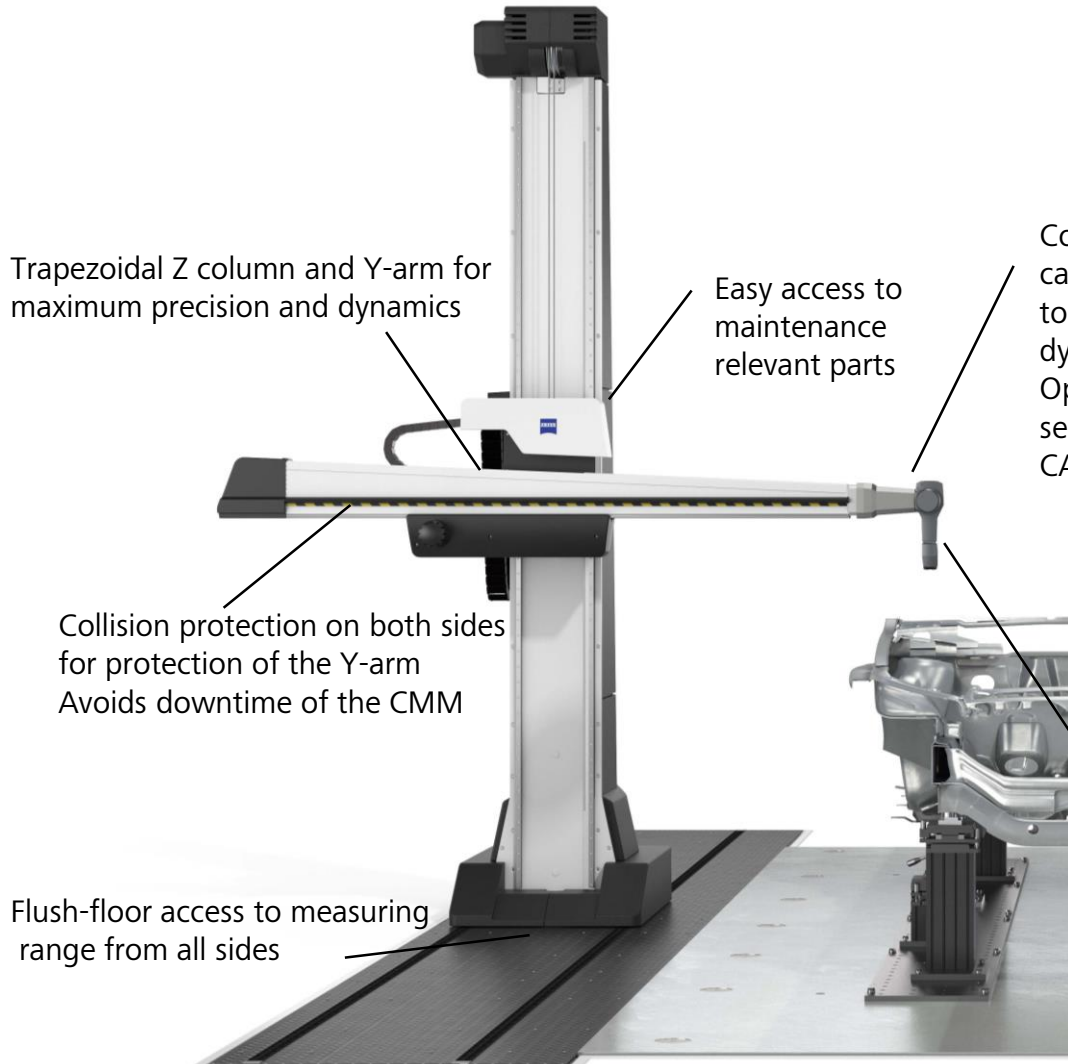


## Multi Sensor System

- With ZEISS EagleEye, geometric elements can be measured and evaluated in record time
- Scanning of free-form geometries for CAD comparison and of geometry elements with the same sensor
- Automatic switch between optical and tactile sensors for features that cannot be optically measured.
- Thermofit extensions with up to 800mm.

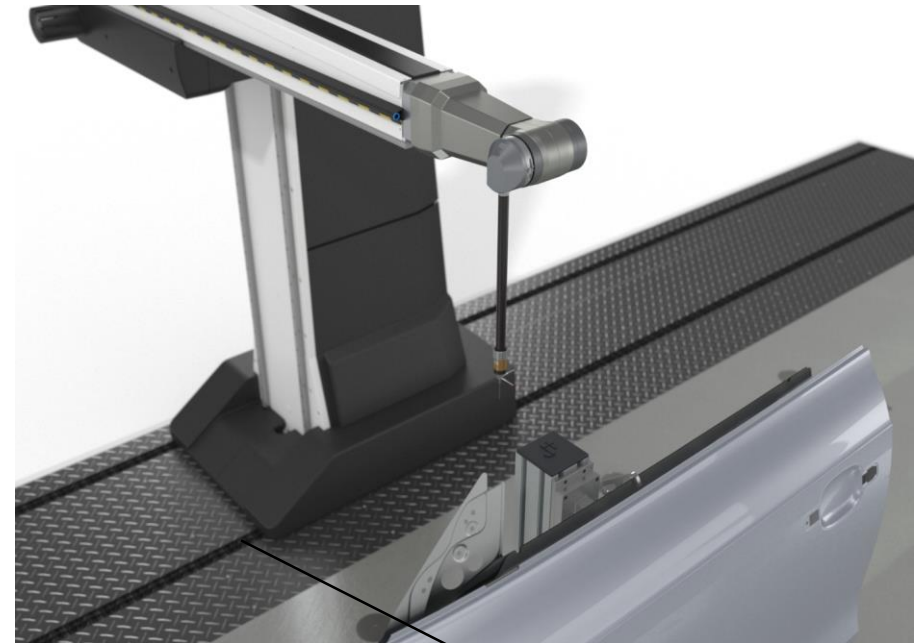
# More than a Robot – The Hambot

## Exceptional Technology - CALENO



Continuous sensor carrier DSC with high torque and high dynamics  
Optional Indexing sensor carrier RDS-C6  
CAA

ZEISS optical sensor system EagleEye for significant shorter measuring time and CAD compare



# More than a Robot – The Hambot

## Exceptional Technology – CALENO T



Full covers made of EPP for excellent thermal isolation

Measuring tables available with optional T-slots or bore pattern for the clamping of fixtures

Inherent stiff measuring plate allows the installation with active damping system



Continuous sensor carrier DSC with high torque and high dynamics  
Optional Indexing sensor carrier RDS-C6 CAA

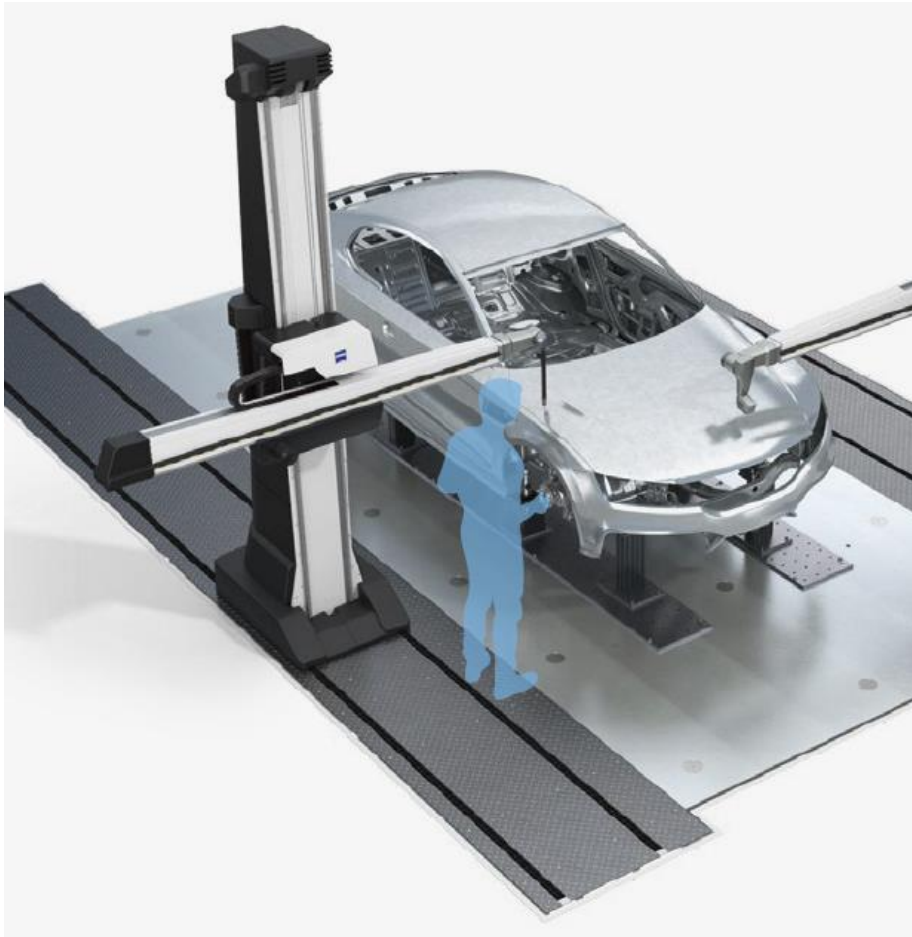
Easy access to maintenance relevant parts

**ZEISS Multi Sensor CMMs for Car Body Applications**  
Safety for the operator and the Hambot



# More than a Robot – The Hambot

## Safety for the Operator

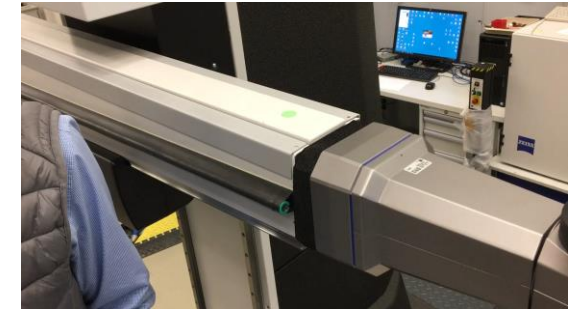


### Friction drives, lag detection and over current protection

- The multi layer safety concept will stop the system, if any obstacle is in the travel path to protect the hambot and the operator.

### Safety edge at the Y-arm

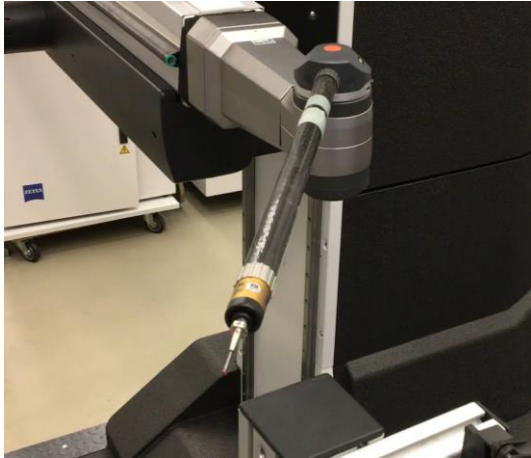
- ZEISS CALENO has standard sensor strips along the entire length of both sides of the Y-arm. If the narrow elastic tubes are deformed on contact, they will instantaneously shut down.



- Due to the safety features, the operator is allowed to work in the system, whilst measuring
- Risk of damaging is significantly reduced to reduce downtime and repair costs.
- Protects the operator from injury

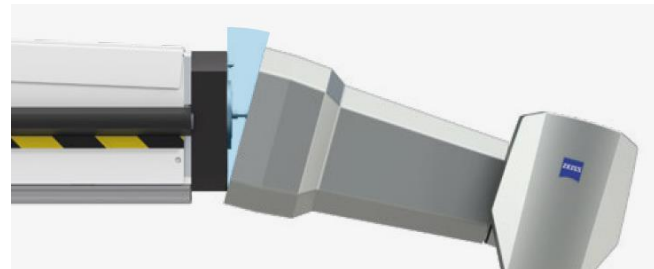
# More than a Robot – The Hambot

## Safety for the sensor system



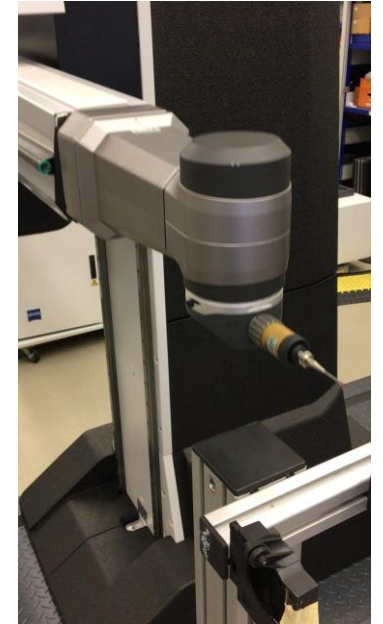
### Collision protection for the sensor

- The connection point to the sensor is spring-mounted on the sensor carrier. This protects the sensor from damage in the case of a collision.



### Optional collision protection for the ZEISS DSC or RDS-C6

- In addition, CALENO can optionally be delivered with an additional spring-mounted collision between the sensor carrier and the Y-arm.



### Protective device on the ZEISS RST-P sensor

- Overtravel protection for ZEISS RST-P To minimize damage by collisions with the stylus. The traverse angle of the stylus on the ZEISS RST-P is an exceptionally large 26 °.

- Maximum protection of the sensor carrier and the sensor system leads to maximum availability of the system and reduced repair costs.

# **ZEISS Multi Sensor CMMs for Car Body Applications**

## CALENO/CALENO T – What is new



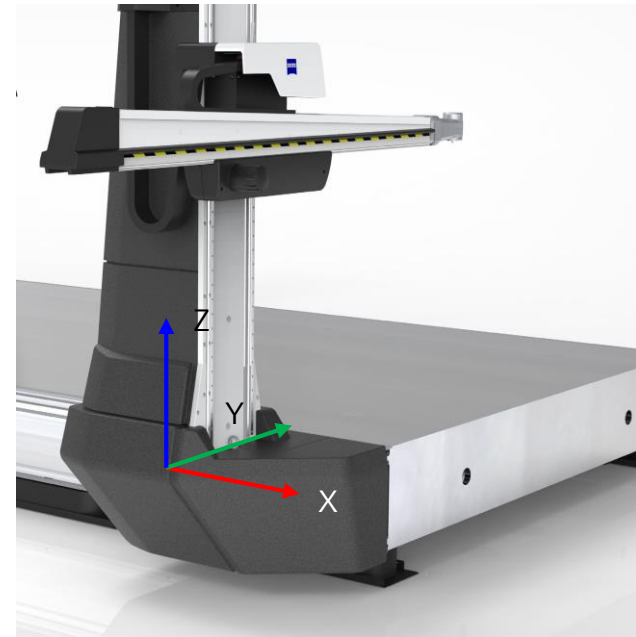
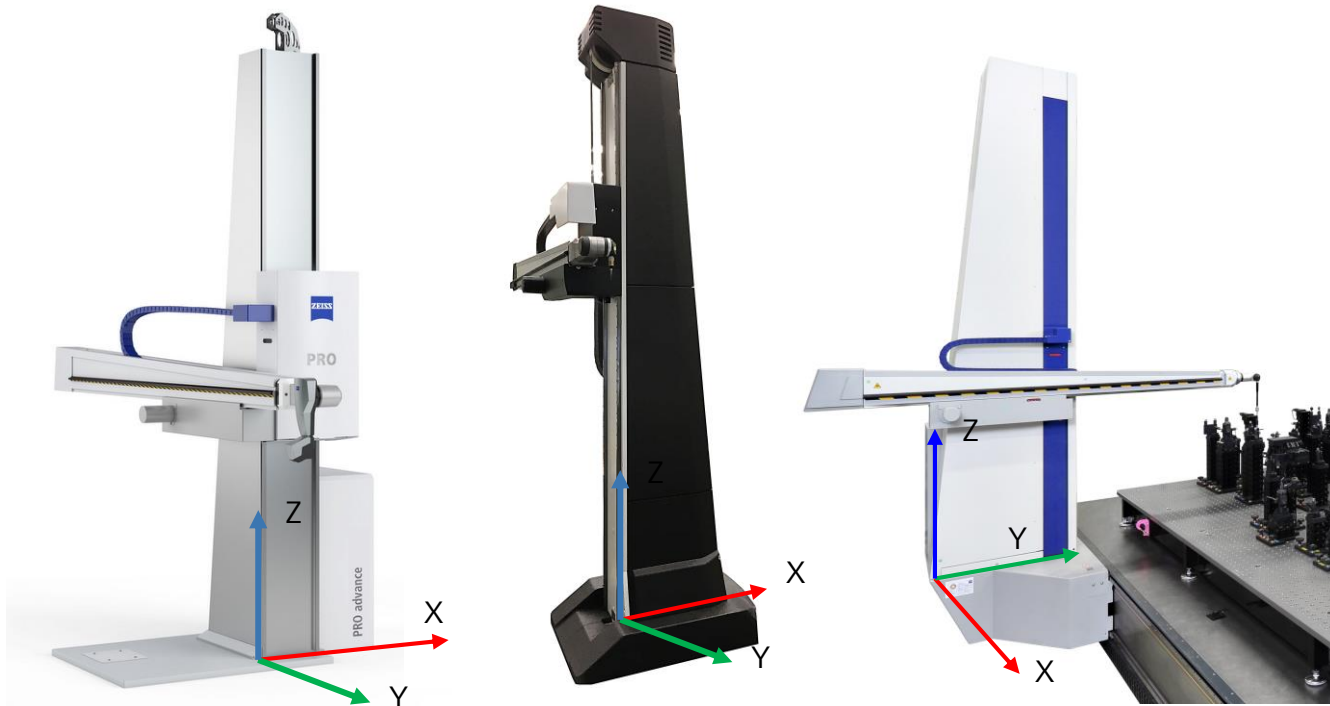


# More than a Robot – The Hambot

## PRO/ CALENO Improvements



- Column turned by 90° for enhanced stiffness



**PRO/ CALENO**

**PRO T/ CALENO T**



# More than a Robot – The Hambot

## PRO/ CALENO Improvements



**PRO**



**CALENO**

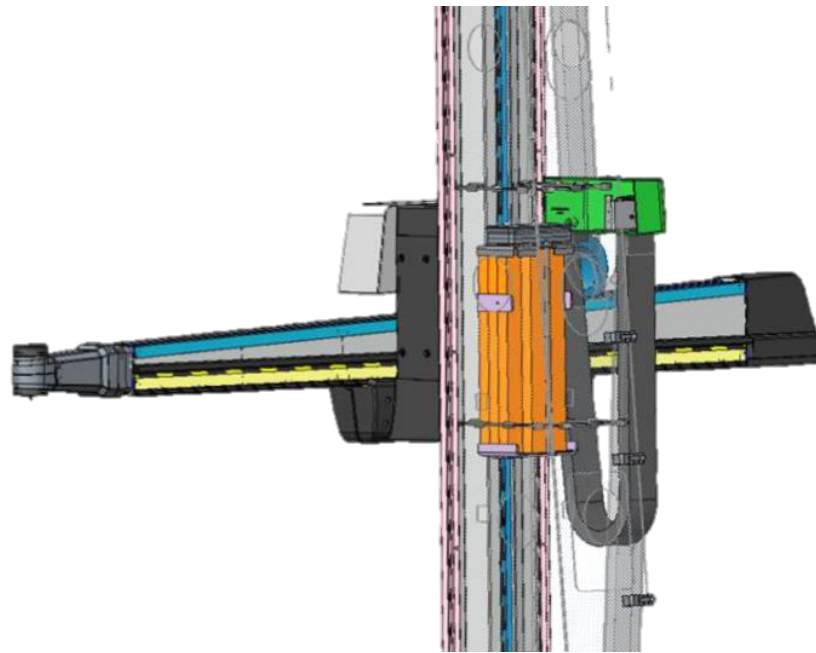
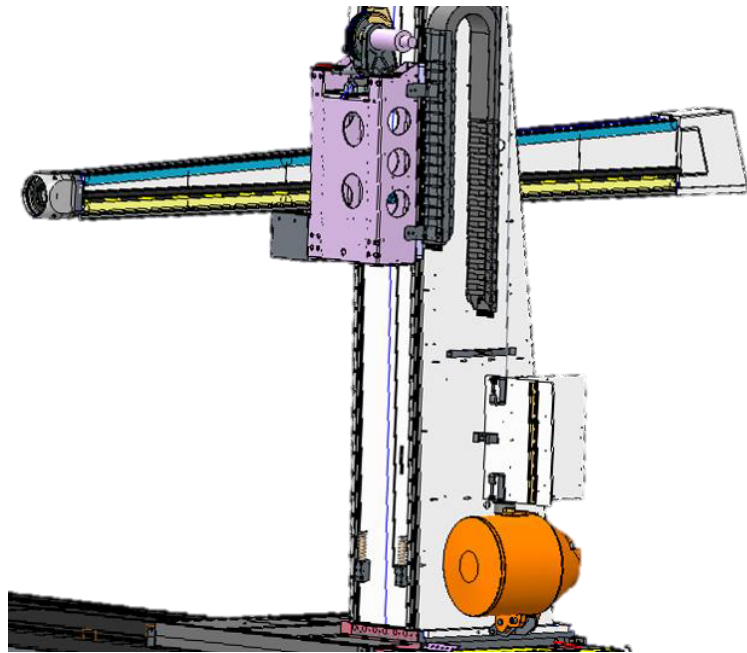
- PRO/ PRO T was available with standard, or full covers
- CALENO is always with full covers
  - Enhanced thermal stability
  - New material EPP with excellent thermal isolation

# More than a Robot – The Hambot

## PRO/ CALENO Improvements

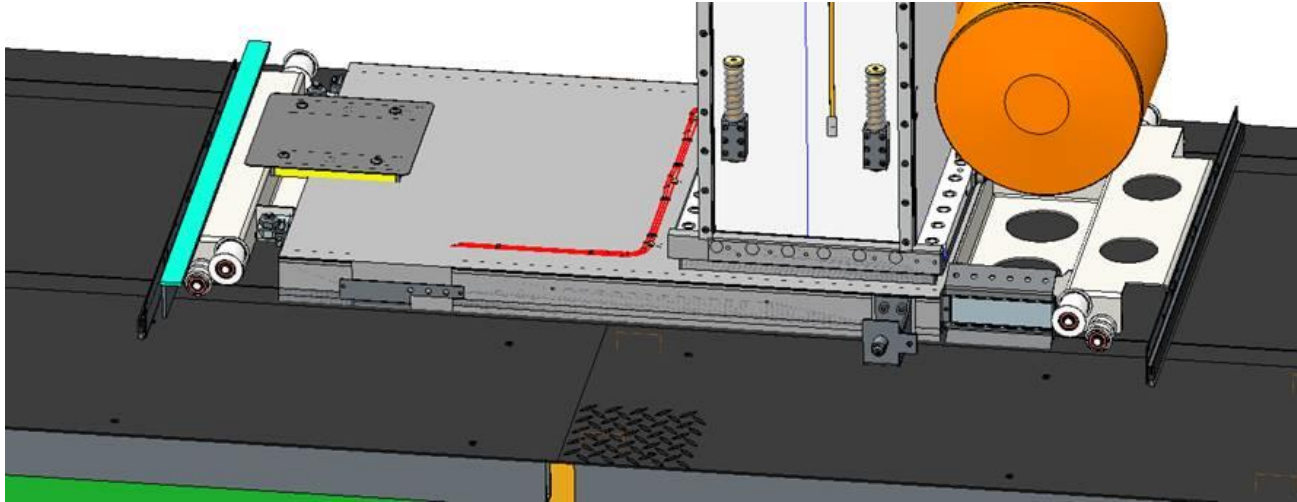


- New counter balance system
  - Counter weight instead of balancer
    - Less service costs
    - Improved MTBF

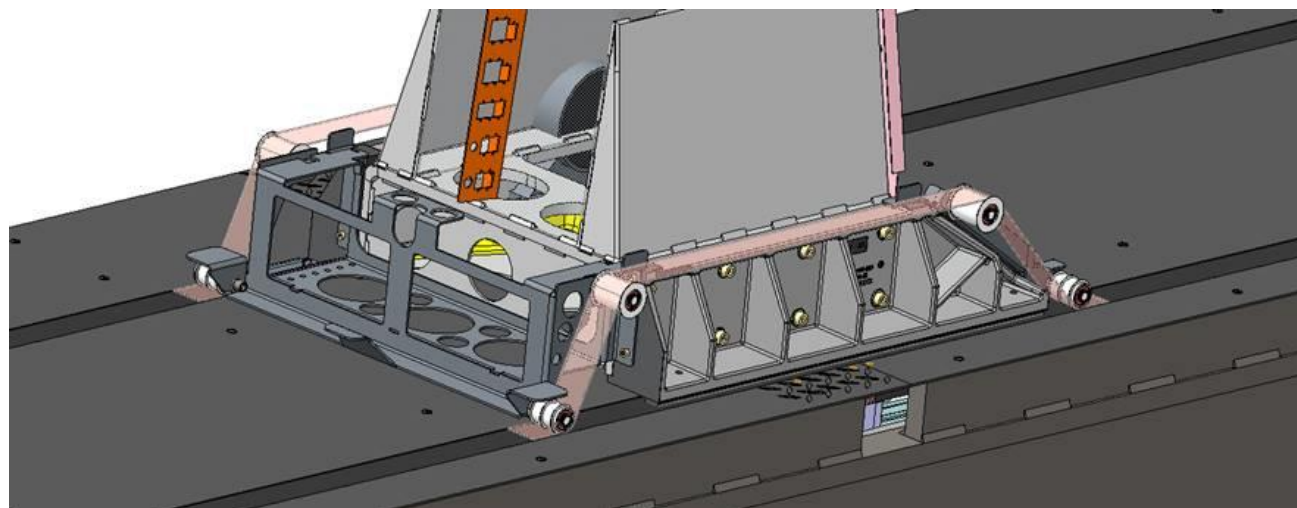


# More than a Robot – The Hambot

## PRO/ CALENO Improvements

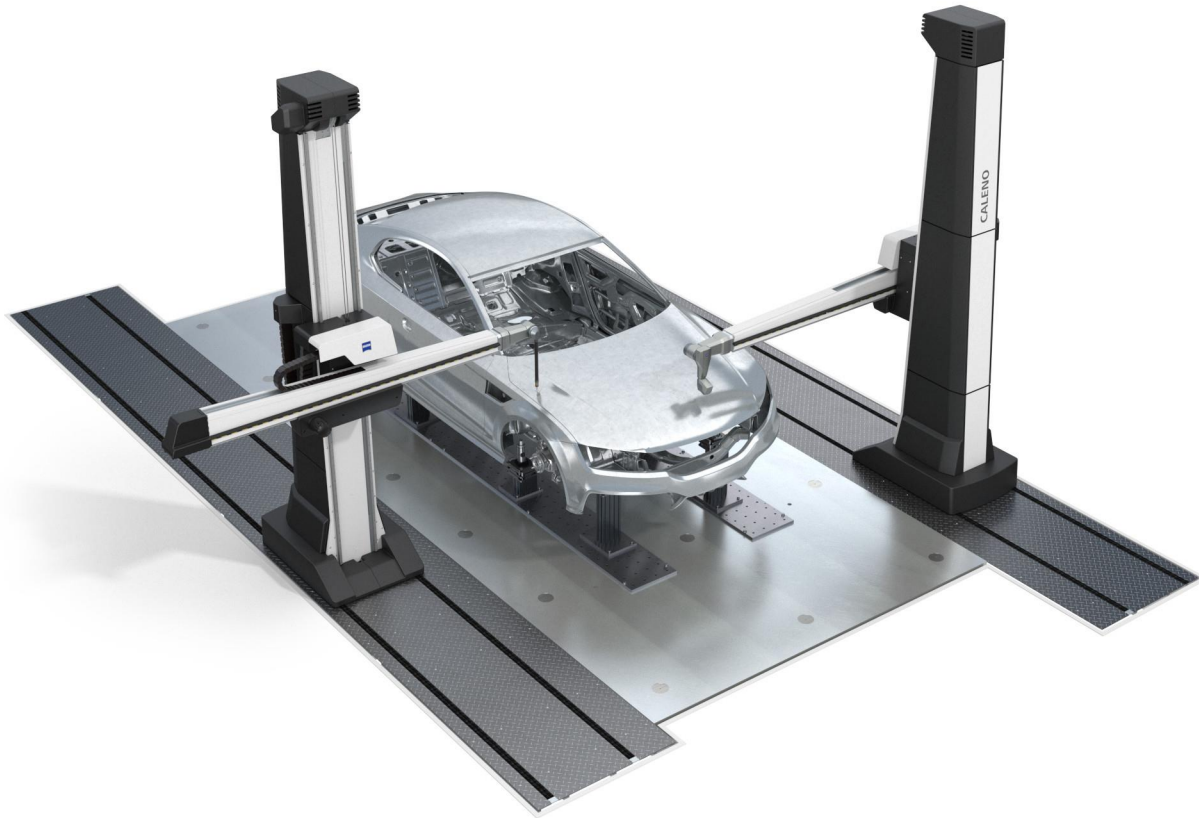


- New X-carrier
  - No welded dedicated X-carrier
  - Reduced complexity
  - Standard with gap covers



# More than a Robot – The Hambot

## What is new? Summary



- CALENO is a fully new developed Hambot (horizontal arm CMM)
  - New designed X-axis as a welded structure with integrated thermal decoupling
  - New Y/Z tower with trapezoid shaped axis and linear ball bearing in all axis
  - New counterbalance system for the column
  - New full covers as standard for improved thermal isolation, environmental protection and modern design
  - New non indexing sensor carrier DSC

# **ZEISS Multi Sensor CMMs for Car Body Applications**

## Articulation



# More than a Robot – The Hambot

## Indexing sensor carrier RDS-C6 CAA





# More than a Robot – The Hambot

## Indexing sensor carrier RDS-C6 CAA - Summary



### Sensor carrier RDS-C6 CAA

#### - Indexing articulating probe holder

- CAA-calibration
  - For short calibration time
  - For maximum uptime of the CMM
- Step width of only 2,5°
- Position repeatability  $\pm 1''$
- Maximum extension 400mm
  - For excellent accessibility even on complex parts
- Safety
  - Spring loaded probe plate with mechanical fall arrester
- Sensors
  - Touch trigger probes:
    - RST-P, TP6 und TP20
  - Optical sensor system FalconEye



# More than a Robot – The Hambot

## Non Indexing Swivel Head DSC





# More than a Robot – The Hambot

## Non Indexing Swivel Head DSC – Improvements CSC - DSC



### Customer benefit

- Higher data rates for future optical sensor systems.
- Improved reliability.
- New, attractive design

### Innovation

- New, improved bearings.
- Slip rings for A axis, n X 360°
- B axis  $\pm 137,5^\circ$

### Replacement for CSC and CSC-U2



# More than a Robot – The Hambot

## Non Indexing Swivel Head DSC – Differences CSC - DSC



### DSC – non indexing probe holder

- Improved performance compared to indexing swivel head
  - XYZ movement and rotation at the same time
- Improved safety, due to additional collision protection of the probe plates
- If extensions longer than 400mm are required, e.g. truck cabins
- For the optical sensor system EagleEye with 6<sup>th</sup> axis
- Passive probe changer for reduced costs and improved reliability
  - Additional ports can be added
- Replaces the CSC



CSC probe changer with 4 ports

# **ZEISS Multi Sensor CMMs for Car Body Applications**

## Touch Trigger Probes



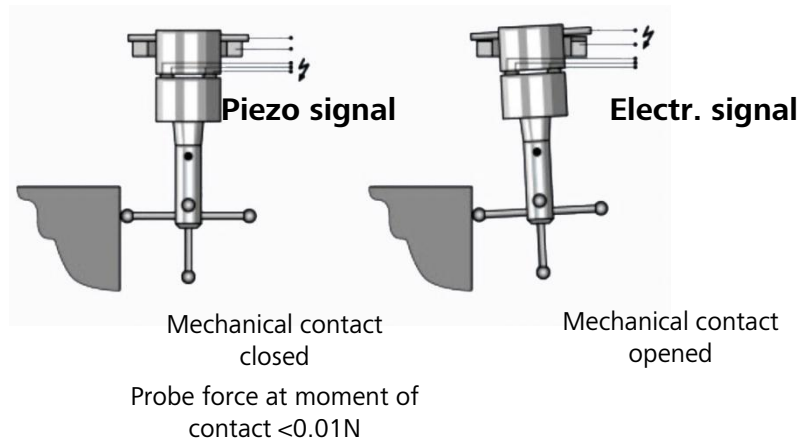
# More than a Robot – The Hambot

## Touch Trigger Probes Zeiss



### RST-P Piezo Probe

- Dual principle of probing
  - first force-free Piezo probe impulse
  - then mechanical deflection
- Better reproducibility than Renishaw touch trigger probes
- Robust
  - Overtravel 26°
  - MTBF more than 5 million trigger
- Optimum universal probe due to
  - Stylus weight up to 10g
  - Stylus length up to 90mm
- Temperature stabilized invar body



# More than a Robot – The Hambot

## Touch Trigger Probes Renishaw



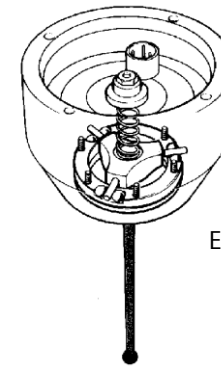
### TP6

- Universal probe, if customer requests Renishaw
- More over travel than TP20
- Cheapest touch trigger probe
- Trigger force can be adjusted



### TP20

- Stylus modules can be changed
- Small diameter
- Different probe modules available
- Standard delivery with one module medium force and one high force
- Due to the risk of false trigger, low force should not be used



Electromechanical switch

# More than a Robot – The Hambot

## Comparison Trigger Probes



	RST-P	TP6	TP20
Principle of function	Piezo	Electro mechanical switch	Electro mechanical switch
Trigger force in the moment of data capture X/Y	<0,01 N	0,11 - 0,3 N with stylus L=20mm	0,08N/ 0,25N/ 0,4N with stylus L=10mm
Trigger force in the moment of data capture Z	<0,01 N	??	0,75N/ 1,9N/ 3,2N
Max. possible stylus length	90 mm	50 mm	50 mm (high force)
Max acceptable stylus mass	10 g	5 g	5 g (high force)
Reproducibility	0,3 µm	0,35 µm	0,35 µm
Stylus length at specification	20 mm	20 mm	10 mm
Durability/ no. of trigger	> 5 Mio	> 1 Mio	> 1 Mio
Over travel X/Y	± 26°	± 22°	± 14°
Over travel Z	8 mm	5,5 mm	4 mm/ 3,7 mm/ 2,4 mm

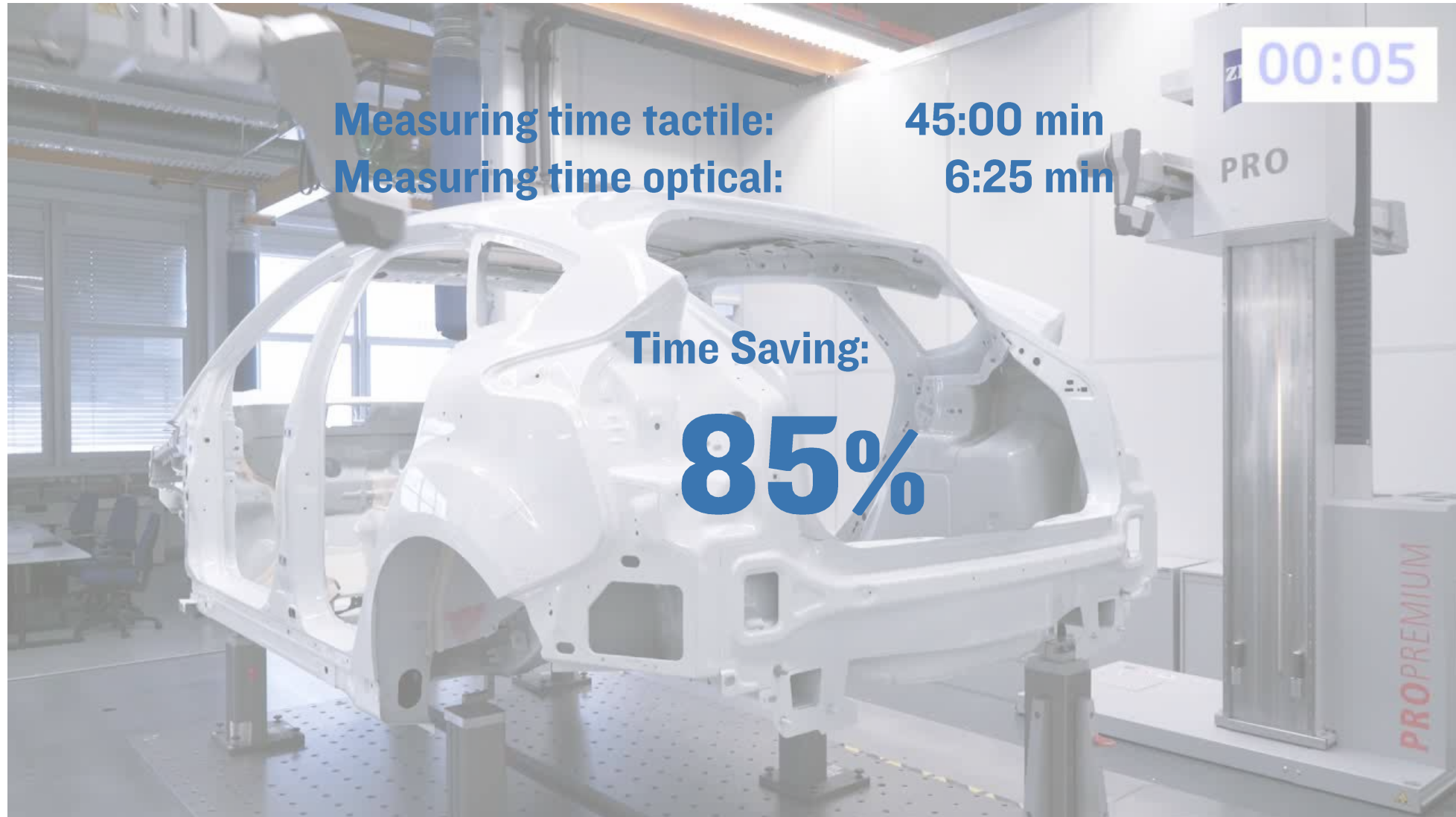
# **ZEISS Multi Sensor CMMs for Car Body Applications**

Optical Sensor System EagleEye



# More than a Robot – The Hambot

Productivity improvement with the EagleEye system



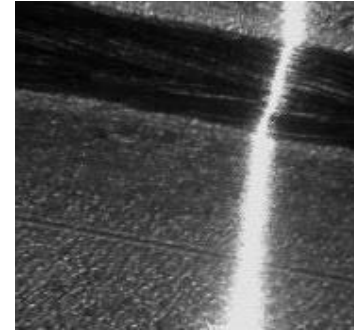


# More than a Robot – The Hambot

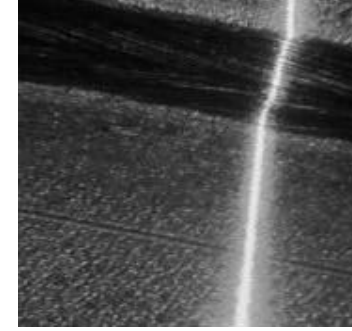
## Ease of use



- **Ease of use**
  - by new camera technology
    - Very high dynamic range

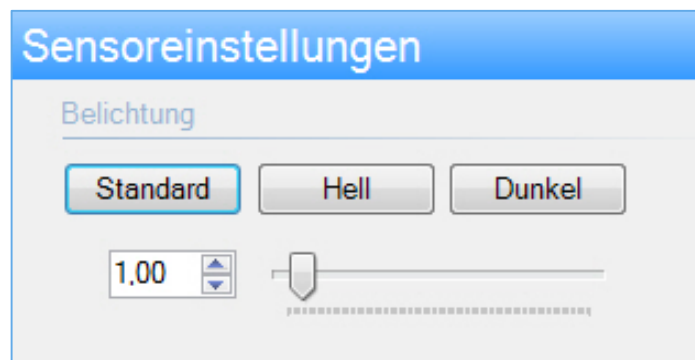


Without LinLog



With LinLog

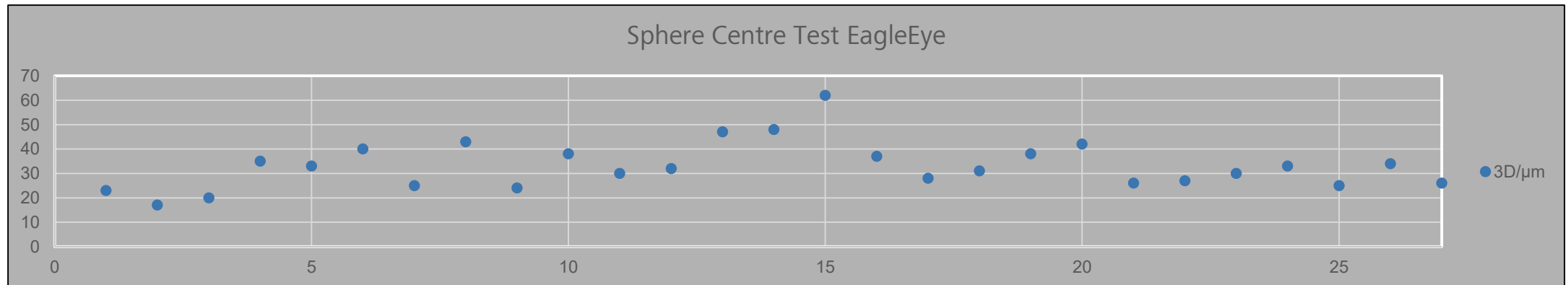
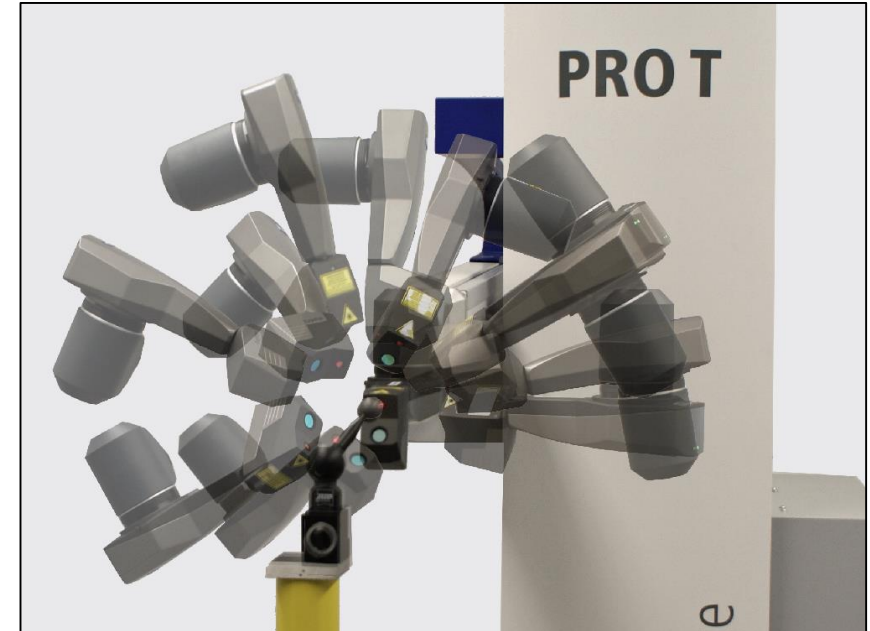
- **Easy scanning of different materials**



# More than a Robot – The Hambot Accuracy



- **Sensor accuracy:  $20\mu\text{m}^1$**
- **System accuracy:  $< 70\mu\text{m}^2$**



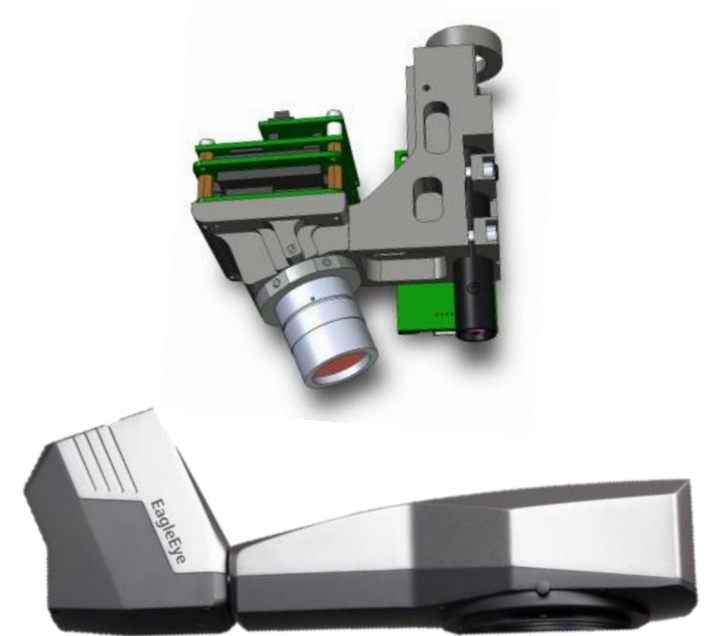
<sup>1</sup> The accuracy of the sensor is defined as the maximum deviation of the X or Y center point of a sphere, measured in the measuring area of the sensor  
<sup>2</sup> Sphere center test on PRO premium 16/25. 29 angular positions of A-V B- and C-axis

# More than a Robot – The Hambot

## Robustness



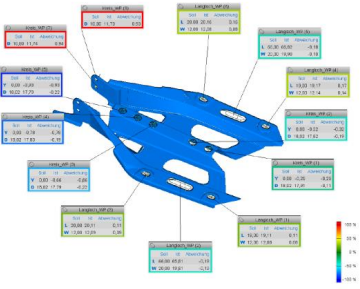
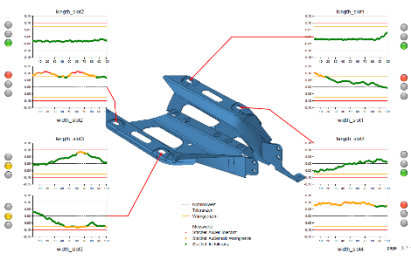
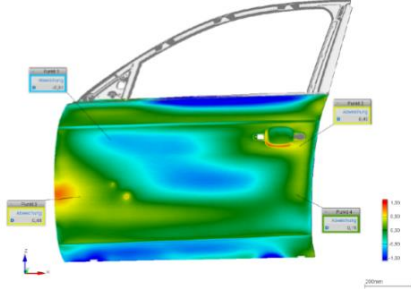
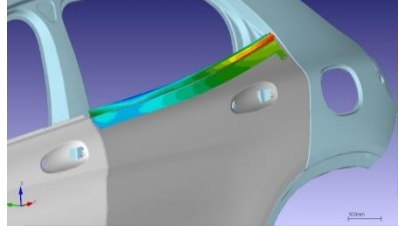
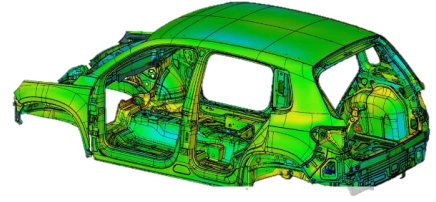
- **Mechanically robust system without moving parts**
- **Body out of aluminum**
  - **Sensor**
  - **C-axis**
- **No spikes, even at critical geometries and materials**
  - **Due to LinLog Technology**



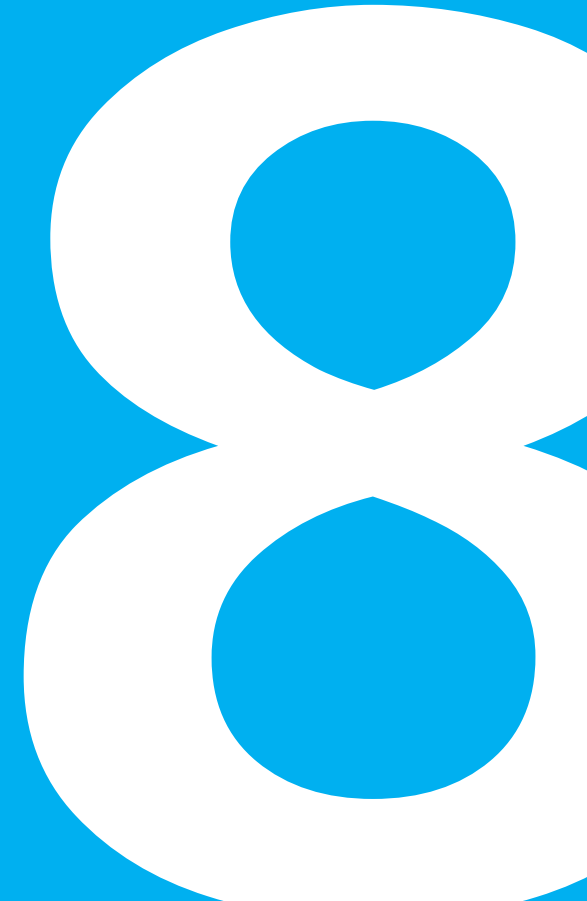
# More than a Robot – The Hambot

## Description of the Application/ differentiation



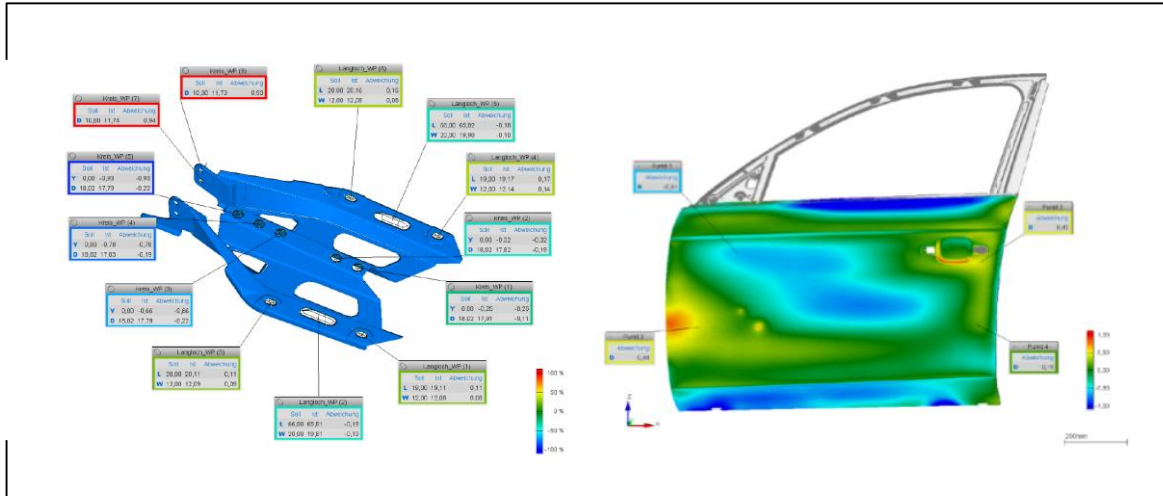
				
<h3>Feature Analysis</h3>	<h3>Feature Serial Measurement</h3>	<h3>CAD Compare outer shell</h3>	<h3>CAD Compare problem analysis</h3>	<h3>Complete Scan for virtual Meisterbuck</h3>
<p>Individual features are measured in order to detect and correct problems. Feature measurement during product startup.</p>	<p>Process control based on test features and functional dimensions. Statistical evaluation of the results. Samples from the current series.</p>	<p>Essentially, the visible surfaces in the area of the outer skin are detected. There is no requirement to detect the inside of the components, or the structural areas.</p>	<p>A typical problem analysis with optical metrology is shown in the picture above. It is e.g. for leak tests in the area of the doors. For this purpose, only the information in this subarea is needed.</p>	<p>All components are recorded completely, ie inside and outside, in order to carry out virtual analyzes and simulations of the components to each other. For this, the deformations must be simulated by the dead weight of the components for the virtual masterbuck.</p>

# **ZEISS Multi Sensor CMMs for Car Body Applications** Software



# More than a Robot – The Hambot

## ZEISS CALIGO - The software for freeform surfaces and features



### 02 Benefits // Highlights

- Easy to use software
- Path-in/Path-out
- Efficient software architecture for processing large data quantity
- Efficient change management
- Integrated simulation functions for off-line programming
- Collision protection by using automatic travel paths
- Including ZEISS PiWeb reporting (professional report creation)

### 01 Main application // description

- Efficient tool for testing and inspection freeform surfaces and standard geometries in car body construction
- Allow meaningful conclusions of car body reports
- Sectional view and 3D intersection curves
- Statistic analyses for processes and production means
- Management dashboards

### 03 Installation locations // facilities

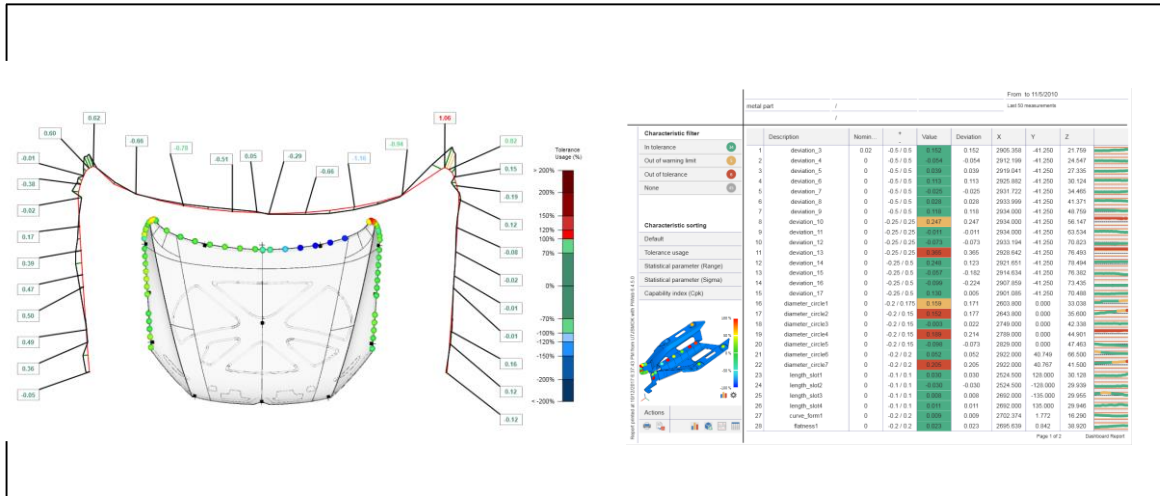
*Facilities of automotive manufactures and suppliers:*

- Individual parts, assembly (geometries, features, surfaces)
- Body construction (geometries, features, surfaces)
- Client/server installation is embedded in existing IT infrastructure



# More than a Robot – The Hambot

## ZEISS PiWeb - Quality data management



## 02 Benefits // Highlights

- Central data store with global data availability
- Tools for in-line data, fast creation of reports with large data
- User specific reports for QA and in-line (e.g. tool manufacturing, assembly, final assembly, management)
- Fast and intuitive handling and creation reports with drag and drop

## 01 Main application // description

- Interactive reports for complex data
- Allow meaningful conclusions of car body reports
- Sectional view and 3D intersection curves
- Statistic analyses for processes and production means
- Management dashboards

## 03 Installation locations // facilities

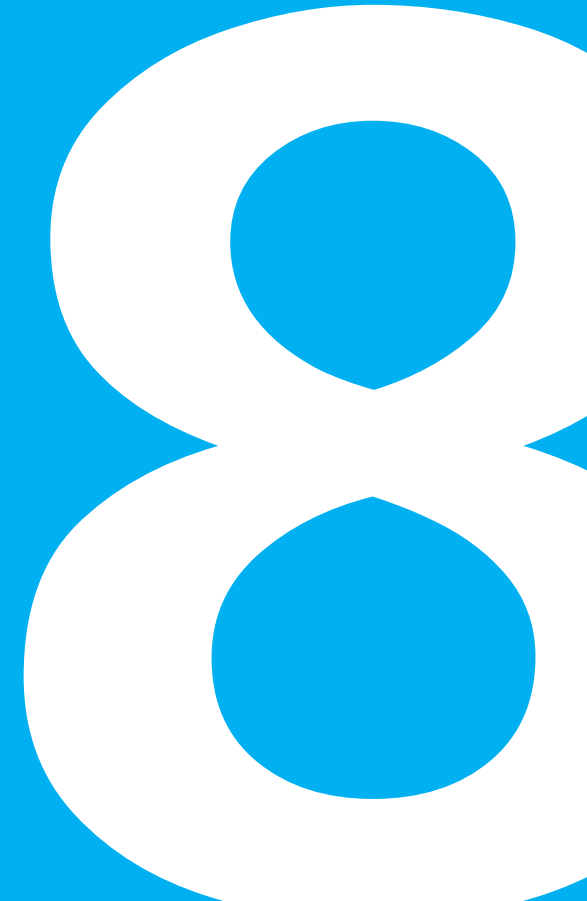
*Facilities of automotive manufactures and suppliers:*

- Individual parts, assembly (geometries, features, surfaces)
- Body construction (geometries, features, surfaces)
- Paint shop (gap-and-flush measurement after painting)
- Final assembly (gap-and-flush measurements for fully assembled vehicles)
- Client/server installation is embedded in existing IT infrastructure



# **ZEISS Multi Sensor CMMs for Car Body Applications**

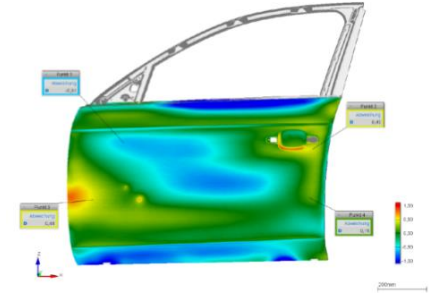
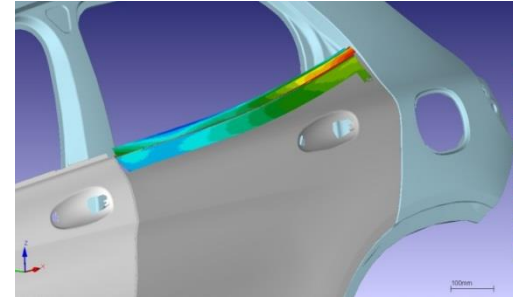
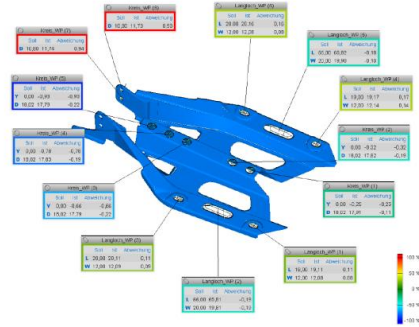
## Applications





# More than a Robot – The Hambot

## Analysis of press parts, assemblies and BIW



### In which phase is being measured?

- Part qualification for start up phase of production
- Fast analysis in the series

### What will be measured?

- Press parts, hanging parts, up to the complete body-in-white.

### How will be measured?

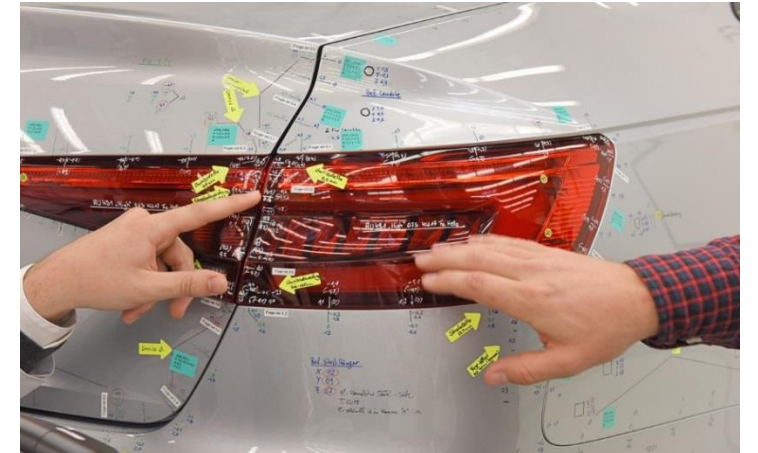
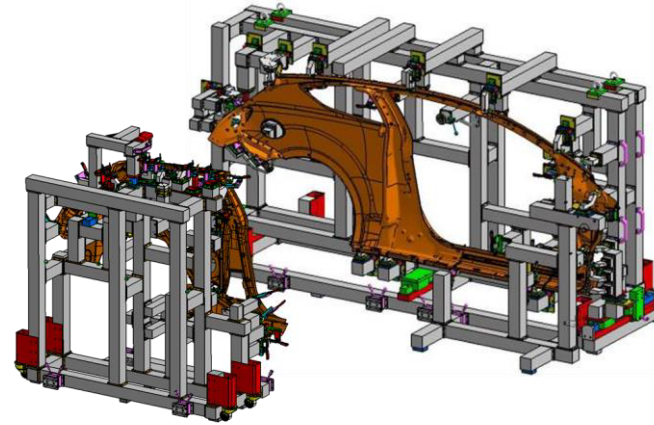
- Fast, tactile and optical feature measurement
- CAD compare for problem analysis.
- Digitization

### How to create the measuring programs?

- Offline, with simulation for the start up phase
- Direct at the CMM for problem analysis

# More than a Robot – The Hambot

## Meisterbock analysis and finished car analysis



### In which phase is being measured?

- Part qualification for start up phase of production
- Fast analysis in the series

### What will be measured?

- Verification of the dimension of the individual components.
- Verification and analysis of quality, flush&gap, optics, haptics, function and assemblies capability.

### How will be measured?

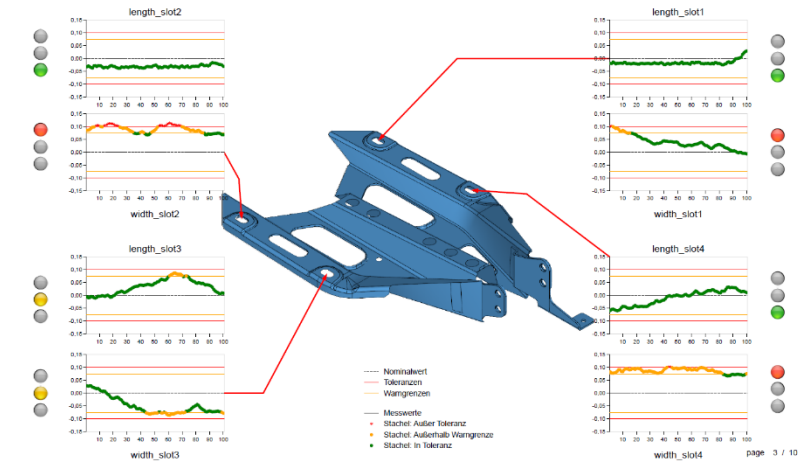
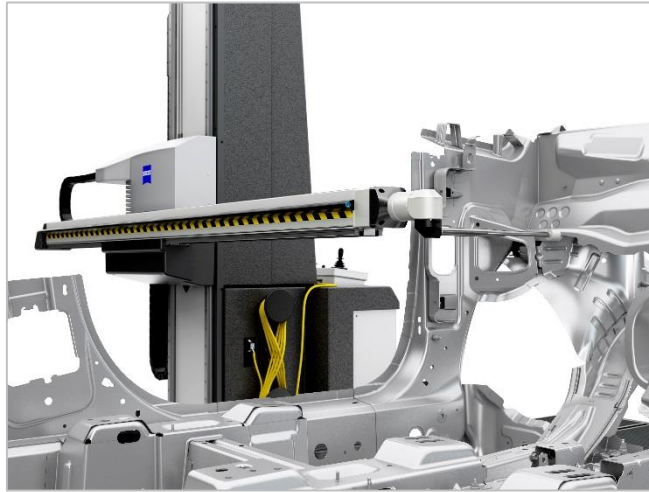
- If necessary, tolerances, construction and design issues can be discussed on the Meisterbock with parts, data and reports

### How to create the measuring programs?

- Direct at the CMM for problem analysis

# More than a Robot – The Hambot

## Serial measurement BIW



### In which phase is being measured?

- Fast process control in serial production

### What will be measured?

- Body-in-white and hanging parts

### How will be measured?

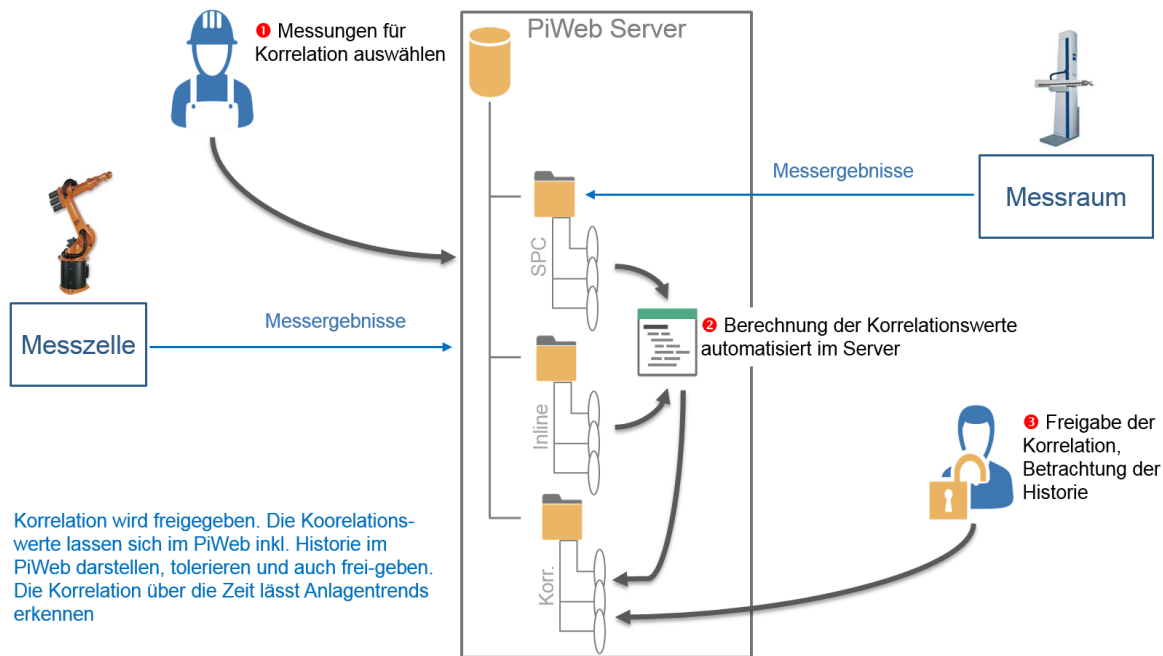
- Direct measurement of geometrical features with optical or tactile sensor.

### How to create the measuring programs?

- Central creation of measuring programs, or at offline stations in the measuring room.

# More than a Robot – The Hambot

## Serial measurement BIW – Correlation for Inline Measurement



### In which phase is being measured?

- Correlation for inline measurement

### What will be measured?

- Body-in-white and hanging parts

### How will be measured?

- Direct measurement of geometrical features with optical or tactile sensor .

### How to create the measuring programs?

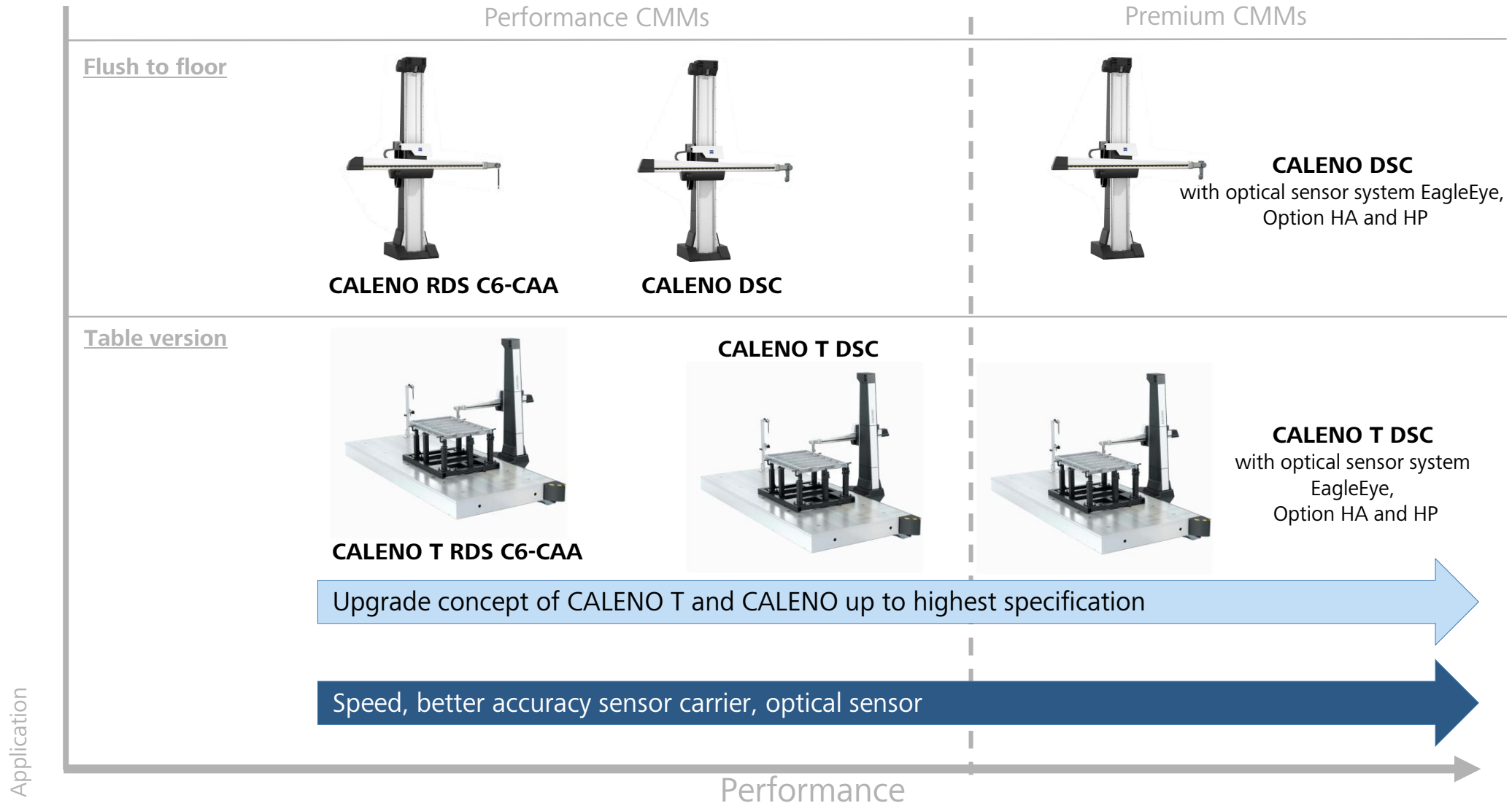
- Central creation of measuring programs, or at offline stations in the measuring room.

# **ZEISS Multi Sensor CMMs for Car Body Applications**

## Portfolio Overview

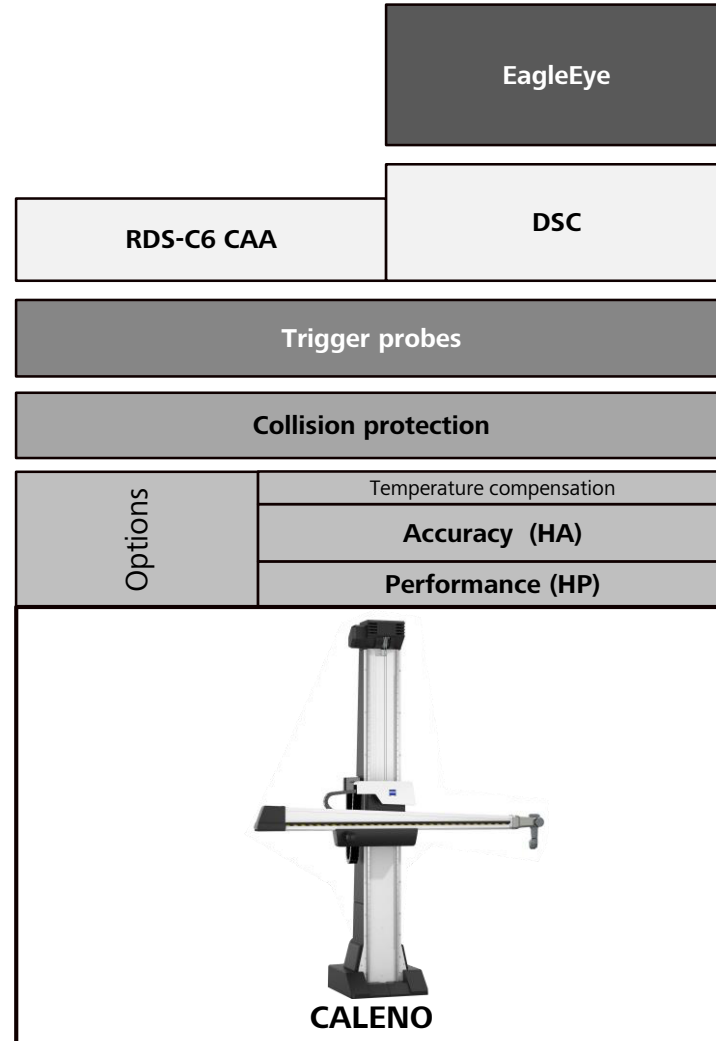


# More than a Robot – The Hambot Portfolio Overview



# More than a Robot – The Hambot

## The platform strategy





# More than a Robot – The Hambot

## The platform strategy



	CALENO / CALENO T
Accuracy for 16/25	27+L/80≤70
Option High accuracy	18+L/125≤50
Measuring range X	3.000 - 25.000
Measuring range Y	1200 <sup>1</sup> , 1600, 1800 <sup>2</sup>
Measuring range Z	2100, 2500, 3000 <sup>2</sup>
Max acceleration	1000mm/s <sup>2</sup>
Option performance	1500mm/s <sup>2</sup>
Max. Travel speed without light barrier	260mm/s
Max. Travel speed with light barrier	866mm/s <sup>3</sup>
Sensor Carrier	RDS-C6, indexing 2,5°/ DSC, continuous
Max. probe extension RDS (indexing)	400mm
Max. probe extension CSC (continuous)	800mm
Tactile probes	TP6/ TP20/ RST-P
Optical sensor CSC	EagleEye
Covers	Full covers

# **ZEISS Multi Sensor CMMs for Car Body Applications**

## Summary

# 10

# More than a Robot – The Hambot

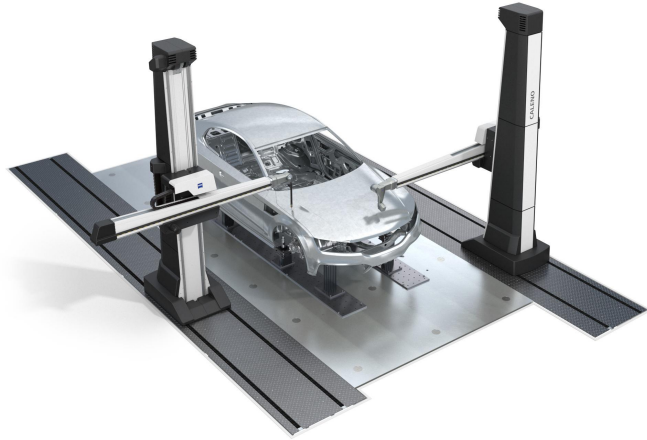
## Summary



- Modular platform concept of the CALENO / CALENO For an optimized adaption of the CMM to the customer needs
  - The CMM can be upgraded with modules like high speed and high accuracy
- Flexible installation
  - Flush to floor with CALENO
  - Side mounted table version CALENO T
- Highest precision and highest productivity
- Robust and service-friendly
- RDS C6 – CAA, DSC
  - the benchmark for indexing and continuous articulating heads
- Machine and operator safety
- Maximum flexibility of the measuring range
- Technology from one source: ZEISS



# More than a Robot – The Hambot Solutions



## CALENO RDS-C6 CAA Duplex

Typical for OEMs with small and medium quantities or pure analysis systems

- Analysis
- Process control series and correlation – low and mid volume
- Meisterbock CMMs
- Finished car analysis



## CALENO T Single/ Duplex

Typical for 1st Tier

- Analysis of press parts and hanging parts
- Serial measurement, e.g., battery trays in production environment



## CALENO DSC Duplex

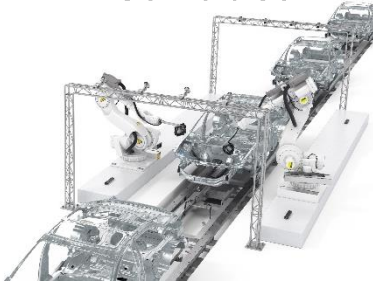



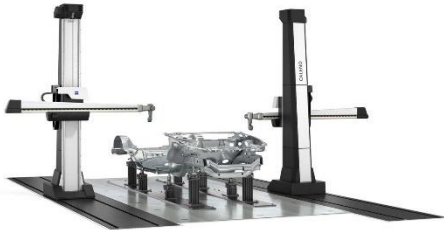

Typical for big OEMs

- Analysis
- Process control series and correlation – high volume
- Meisterbock CMMs
- Finished car analysis

# More than a Robot – The Hambot

## Hambot und Scanbox: Differentiation of the two measuring systems Inline/Atline/Offline



		Strength: Metrology Feature extraction	Strength: Digital Twin Full part scanning	Process control	Metrology & Digital Twin
Inline <b>01</b>	<p>Measuring of individual modules and full part digitization of assembled parts and complete bodies</p> <p>// e.g. 54 sec.</p>	<p>AICell trace</p> 	<p>ATOS Inline</p> 		
Atline <b>02</b>	<p>Complete optical scans for CAD comparison e.g. of attachments</p> <p>// within 10 to 15 min..</p>	<p>Hambot – CALENO</p> 	<p>ATOS ScanBox</p> 		
Offline <b>03</b>	<p>Precise analysis of any carbody part. Highly precise and optically efficient.</p> <p>// from a few min. to hrs.</p>	<p>Hambot – CALENO</p> 	<p>ATOS ScanBox</p> 		



Seeing beyond