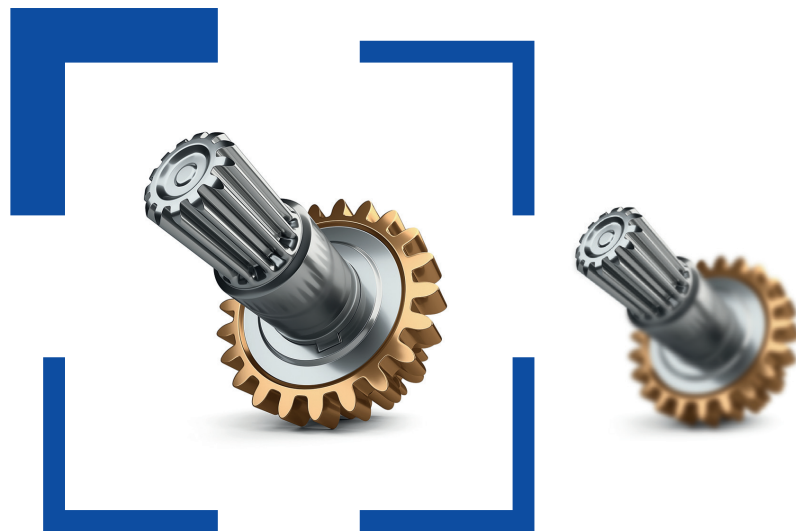


# All-in-focus.

## First time. Every time.



**ZEISS Visioner 1**

Accessories

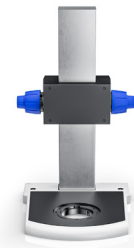
[zeiss.com/visioner1](http://zeiss.com/visioner1)



Seeing beyond

# ZEISS Visioner 1 & Accessories

More flexibility tailored to your application



**Stand 300**

By adopting the Stand 300, ZEISS Visioner 1 is now more flexible & accommodating allowing for a larger working volume, as well as enabling the addition of new manual and motorized stages for precision sample inspection & positioning.



**New front optics**

With the addition of three new front optics, two of which are telecentric, ZEISS Visioner 1 is now even more flexible and even more accurate when it comes to advanced measurement tasks.



**Motorized & manual stages**

In addition to the motorized and manual x/y stages, a manual specimen holder kit with rotary axis and various holders such as clamping pliers, drill chucks and a three jaw rim chuck is also available. This can be attached via a new insert plate.



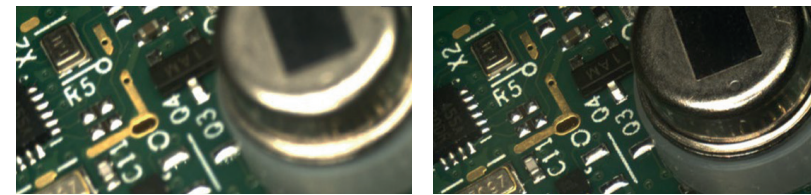
**Specimen holder-kit with rotary axis and insert plates**



ZEISS Visioner 1 is an innovative digital microscope featuring MALS™ technology for shop floor quality control and quality assurance applications and for the first time ever enabling real-time all-in-focus visualization. Get more flexibility and a higher quality for your inspection with the ZEISS Visioner 1 accessories.

## Workstation and performance

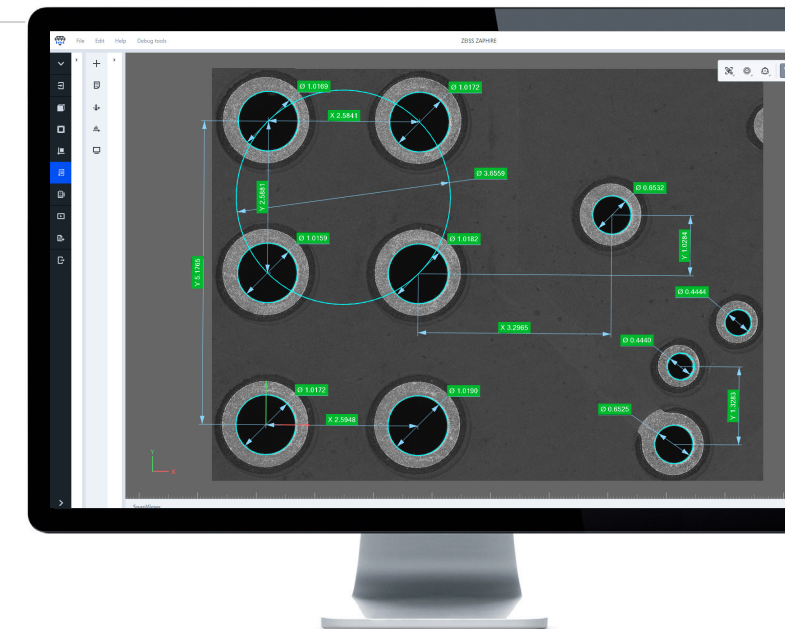
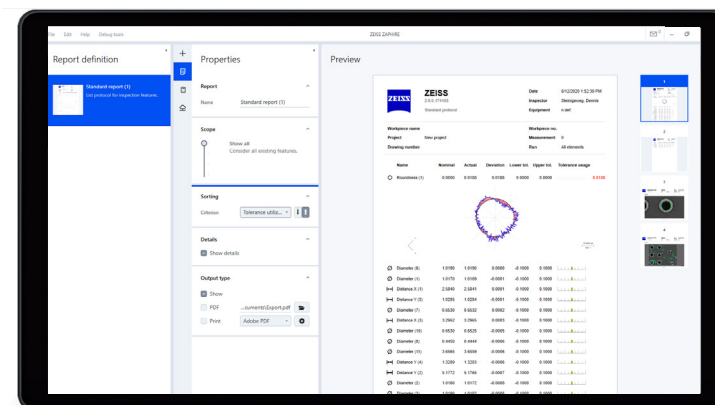
An upgraded workstation with enhanced performance for much faster refresh rates of live EDoF and topographical images, for when the inspection tasks are more demanding.



Increased performance means that full focusing capability can be used at much higher speeds, resulting in higher throughput and enabling faster freeform inspection.

## ZEISS ZAPHIRE offline evaluation

To perform advanced dimensional measurements in microscopy images, ZEISS ZAPHIRE offline evaluation extends the measurements functionalities of ZEISS Visioner 1 in 2D. You can use automatic alignment, automatic measurement, and automatic reporting to increase throughput and to get user-independent results. With the new telecentric objectives, ZEISS Visioner 1 can perform automated measurements according to ISO 10360-7:2011.



**Carl Zeiss IQS Deutschland GmbH**

Carl-Zeiss-Straße 22  
73447 Oberkochen

Vertrieb

Telefon: +49 7364 20 6336

E-Mail: [sales.metrology.de@zeiss.com](mailto:sales.metrology.de@zeiss.com)

Service

Telefon: +49 7364 20 6337

E-Mail: [info.metrology.de@zeiss.com](mailto:info.metrology.de@zeiss.com)

[www.zeiss.de/imt](http://www.zeiss.de/imt)

**Carl Zeiss Industrial Metrology, LLC**

6250 Sycamore Lane North  
Maple Grove, MN 55369/USA

Phone: +1 800 327-9735

Fax: +1 763 533-0219

[info.metrology.us@zeiss.com](mailto:info.metrology.us@zeiss.com)

[www.zeiss.com/metrology](http://www.zeiss.com/metrology)