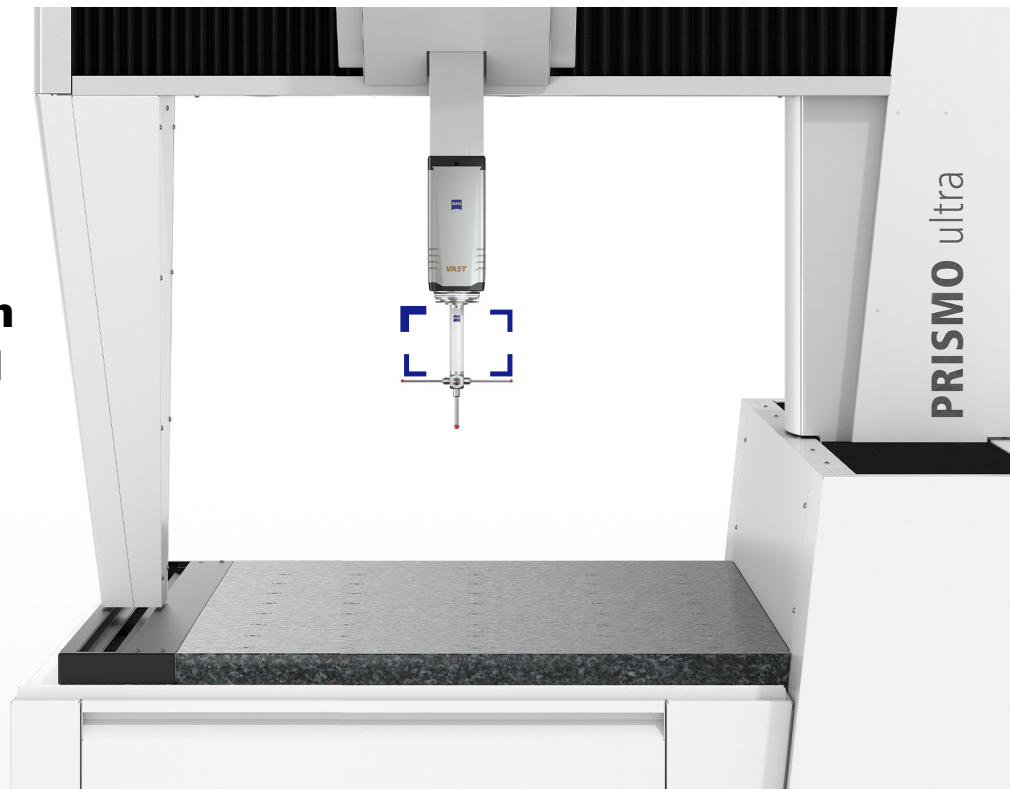
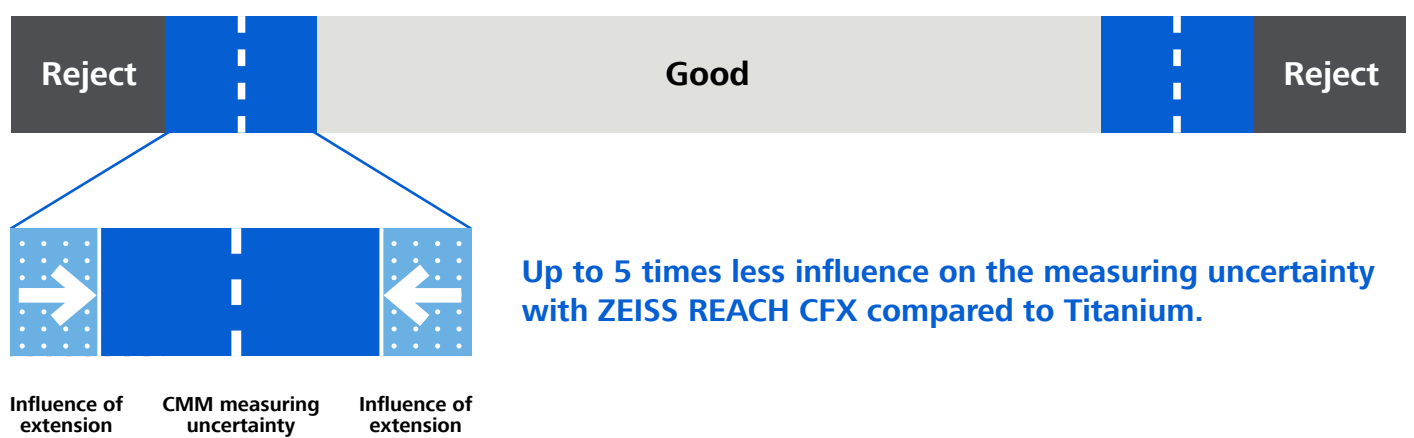


## Don't let the extension downgrade your CMM



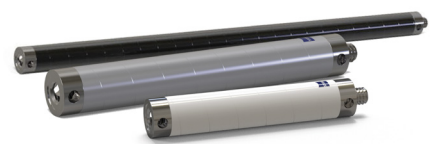
## No more downgrading

To distinguish good parts from rejects having reliable measuring results is a necessity. This can only be achieved when keeping the measuring uncertainty at a minimum. Using the wrong extensions has a direct negative influence on the overall measuring uncertainty and therefore downgrades the accuracy your CMM could achieve.



## Introducing ZEISS REACH CFX

ZEISS REACH CFX is the new range of carbon fiber extensions that are customized for the varying accuracy requirements of different CMMs to always keep their accuracy on the highest possible level.



## Light weight, thermally stable and statically stiff

The overall influence of the extension on the measuring uncertainty is mainly determined by three factors: weight, thermal expansion and static stiffness.

All ZEISS REACH CFX extensions are made of carbon fiber with unique winding and with adapters cut into the fibers. This ensures that they are lightweight, thermally stable and statically stiff.

Only the degree of stiffness distinguishes the three variants and this ensures different performance levels within the product family.



## Comparison table

Material	Weight	Expansion	Deflection
<b>ZEISS REACH CFX 5</b>	4 icons	4 icons	4 icons
<b>ZEISS REACH CFX 3*</b>	4 icons	4 icons	4 icons
<b>ZEISS REACH CFX 1</b>	4 icons	4 icons	4 icons
Aluminum	4 icons	4 icons	4 icons
Titanium	4 icons	4 icons	4 icons

## Quick reference guide for easy pairing

Performance	Extension	Recommended for
High	<b>ZEISS REACH CFX 5</b> White	ZEISS XENOS, ZEISS PRISMO ultra, ZEISS PRISMO verity, ZEISS MICURA and comparable CMMs.
Medium	<b>ZEISS REACH CFX 3*</b> Silver	ZEISS PRISMO, ZEISS PRISMO fortis, ZEISS ACCURA and comparable CMMs.
Low	<b>ZEISS REACH CFX 1</b> Black	ZEISS CONTURA, ZEISS SPECTRUM plus** and comparable CMMs.

Various sizes are available for each extension.

\* ZEISS REACH CFX 3 is the new name for ZEISS ThermoFit®.  
\*\* Not available worldwide.

[Find out more](#) about which ZEISS REACH CFX version works best for you.