

# Uncovering details with brilliant optics



**ZEISS SL 800**

[www.zeiss.com/sl800](http://www.zeiss.com/sl800)



Seeing beyond



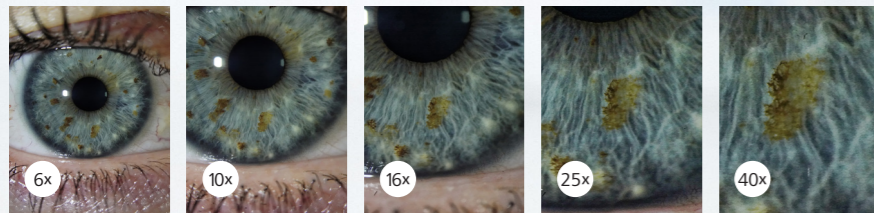
# ZEISS SL 800 Slit Lamp

Premium optical quality with a high level of comfort

With perfectly balanced ZEISS optics, extensive illumination options and a user-friendly operator concept directly at your fingertips, the SL 800 from ZEISS reveals details for diagnosis and optimizes your workflow. Furthermore, the modularity and the wide range of optional components and accessories adapt to your individual needs whenever necessary.

## Superior optics for high-definition image quality.

Larger ZEISS lenses enable a better light-throughput. And in combination with the anti-reflex coating, they provide a high-definition image in true-to-life color with high contrast - even in 40x super magnification. Moreover, the apochromatic optimization greatly reduces chromatic and spherical aberrations in favor of visualizing structural details.



Continuous magnification steps reveal detailed structures.

## Innovative operator concept for an enhanced focus on your patients.

With the new AutoView, you can easily change magnification with the motorized two-button mechanism. The optional electronic QuickStop brake is also activated without the need to release the joystick. The intelligent stand-by EcoMode saves energy by shutting down automatically when not in use, while the slit lamp then turns on again by simply touching the joystick. In short the SL 800, the next generation of slit lamps from ZEISS, delivers proven performance in a modern design.



AutoView and QuickStop are located comfortably next to the joystick.



Conveniently decenter the slit by repositioning the mirror base only.

## TrueView optics

Apochromatic ZEISS lenses with anti-reflex coating for true-to-life color with high contrast.

## AutoView

Convex and concave shaped buttons next to the joystick for easily changing magnification.

## VarioLight

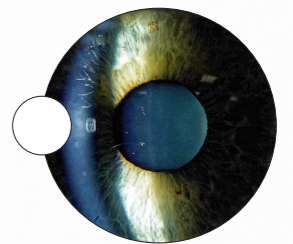
The LED light source is accompanied by a halogen filter to provide the advantages of both illumination characteristics.

## Extensive illumination and filter options.

With the VarioLight feature, you can now select your preferred examination light – cold-white or warm-white. This allows you to gain a sharper and clearer image, as well as a more natural fundus impression. Together with the integrated and optional filters and diffusor, you are equipped with an all-around setup for the observation of anterior and posterior segment.<sup>1</sup>

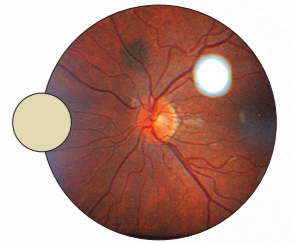
### VarioLight cold-white

A slight bluish illumination benefits scattering and helps to identify irregularities within the anterior segment.



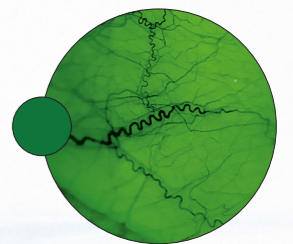
### VarioLight warm-white

The warm halogen-like color temperature supports a more natural fundus impression.



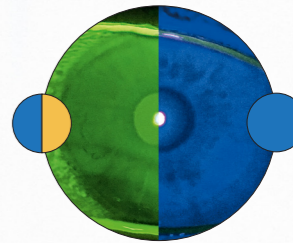
### Green filter ("red free")

The redesigned filter characteristics provide a red-free, high-contrast image to improve the visualization of blood vessels.



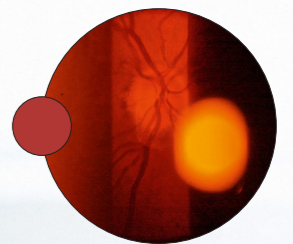
### Blue filter

In combination with the optional yellow filter, it provides enhanced contrast during fluorescence analysis to visualize corneal defects and for contact lens fitting.



### Red filter

For differentiated observation of the retinal layers.



<sup>1</sup> Requires optional equipment





# ZEISS SL Imaging Solution and Accessories

## Upgrade to meet your needs

### ZEISS SL Imaging Solution

The optional ZEISS SL Imaging Solution enables convenient capturing of high-quality images and videos for documentation, patient consultation or presentations. Combine the SL Imaging Software with the SL cam compact.



## Technical data

### ZEISS SL 800

Magnification	6x/10x/16x/25x/40x, with 10x eyepiece, compensation of ametropia $\pm 8$ dpt
Interpupillary distance	Convergent tube 50 – 84 mm; Parallel tube 52 – 78 mm
Light source	LED
Slit illumination	VarioLight cold-white, VarioLight warm-white
Filters	Blue, halogen, green (red-free), red, diffusor
Slit width	Continuously 0 – 12 mm
Slit length	Continuously 1 – 12 mm with scale index; variable in steps 0.2/1/3/5/9/12 mm
Slit diameter	0.2/1/3/5/9/12 mm
Slit rotation	Continuously 0° – 180°; click stop at 45°/90°/135°
Slit decentration (horizontal)	Available; fixable at 0°
Slit inclination (vertical)	0°/5°/10°/15°/20°
Swivel range of slit projector	>200° with scale; click stop at 0°/±45°/±60°

Operation	Control panel with joystick, brightness control; Controls for AutoView & QuickStop (optional)
Adjusting range	110 mm (side), 30 mm (height), 110 mm (length)
Weight	12 kg (incl. headrest)
Dimensions (W x H x D)	315 mm x 655 mm $\pm$ 15 mm x 395 mm
Power supply	100 – 240 V AC, 50/60 Hz

### Accessories for ZEISS SL 800

Tonometry	Applanation tonometer AT 030
Fundus observation	Fundus VarioView, mirror (short)
Other	Tube adapter 20°, yellow filter-aperture module, 10x eyepiece with scales, beam splitter 50/50, co-observation tube, fixation light, breath shield, paper pads for chinrest

### Components of ZEISS SL Imaging Solution

Camera	SL cam compact, incl. SL Imaging SW
PC	SL Workstation
Other	Wide-field illumination, 10x eyepiece with cross-hairs, focusing rod, network isolator, isolation transformer (to use with customer PC)

