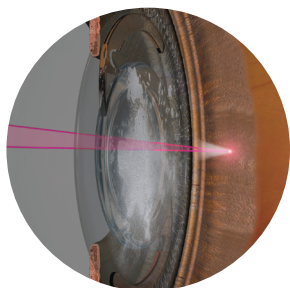


Precise capsulotomy laser for your cataract workflow

ZEISS VISULAS yag



The VISULAS® yag laser from ZEISS is a modern and compact laser workstation for safe and effective photodisruption. This application-based laser allows you to perform posterior capsulotomy for a high variety of IOLs and for iridotomy.



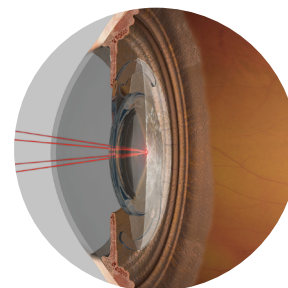
High-precision super gaussian beam

The high-precision super gaussian beam focuses the optimal amount of laser energy onto the point of treatment. This allows using a minimum amount of laser energy for a safe procedure.



Application-based motorized focus shift

Based on the selected application, the automated focus shift sets the focal point of the treatment beam in front of, behind or directly at the focal point of the aiming beam.



Precise focusing in a high variety of IOL conditions

The four-point aiming beam merges into one point at the laser focal plane, enabling high-precision focusing. If a multi-focal IOL is implanted, it is possible to reduce to a two-point aiming beam.

The ZEISS VISULAS yag workstation can be conveniently integrated into the ZEISS Cataract Workflow. ZEISS VISULAS yag provides you with a premium option to treat posterior capsulotomy opacification.¹



For full list of technical specifications, application videos, reviews and more, visit www.zeiss.com/visulasyag

¹ Connectivity to ZEISS FORUM requires an optional license and VISUCONNECT 600.

Technical specifications

ZEISS VISULAS yag

ZEISS VISULAS yag	
Laser source	Nd:YAG laser: flash lamp-pumped, Q-switched
Laser wavelength of therapy beam	1064 nm
Pulse duration	< 4 ns (typically 2 ns to 3 ns)
Pulse mode	<ul style="list-style-type: none">▪ Single pulse: 9.0 mJ to 13.0 mJ at max. 2.5 Hz▪ Double pulse: 18.0 mJ to 28.0 mJ at max 1.0 Hz▪ Triple pulse: 29.0 mJ to 45.0 mJ at max 1.0 Hz
Beam Profile	Super Gaussian
Energy attenuation	22 levels
Focus shift between aiming and therapy beam	0/150/225/300 µm, toggle between anterior/posterior
Data output	PDF to USB drive Optional: PDF report to ZEISS FORUM ¹ (with ZEISS VISUCONNECT 600)
Laser class	Class 4 (in accordance with IEC 60825-1)
Dimensions	201 mm (H) × 230 mm (W) × 290 mm (D)
Weight	≤ 8 kg
Laser Slit Lamp	
LED illumination	5.6 V, 2 W brightness continuously adjustable
Slit width	0 to 14 mm (continuously)
Slit height	1/3/5/9/14 mm
Slit image rotation	0°/±45°/90°
Aiming beam	Diode, 660 nm to 680 nm, 2-point/4-point (switchable)
Magnification	8×/12×/20×
Integrated display	InsightView® optional
Pupil distance setting range	55 mm to 78 mm
Adjustment range for the observer's refractive error	-5 D to +5 D
Device class	2 in accordance with ISO 15004-2
Electrical power supply	Supplied by laser console
Weight	≤ 16.0 kg
Control Panel	
Weight	≤ 2 kg
Optional	
<ul style="list-style-type: none">■ Panel PC (SL Workstation)■ ZEISS SL Imaging Solution■ Standard foot switch■ TouchControl® foot switch■ Instrument table IT 1060.i/IT 760.i■ ZEISS FORUM license	
Applicators	
<ul style="list-style-type: none">■ LSL yag laser slit lamp	

¹ Connectivity to ZEISS FORUM requires an optional license

en-INT_31_022_00721 Printed in Germany. CZ-VIII/2023 International edition: Only for sale in selected countries. The contents of the datasheet may differ from the current status of approval of the product or service offering in your country. Please contact our regional representatives for more information. Subject to changes in design and scope of delivery and due to ongoing technical development. VISULAS, FORUM, TouchControl and InsightView are either trademarks or registered trademarks of Carl Zeiss Meditec AG or other companies of the ZEISS Group in Germany and / or other countries. © Carl Zeiss Meditec AG, 2023. All rights reserved.