



VISALIS 500 Family from ZEISS

Experience the difference





Nothing
beats
firsthand

experience

Before making an important decision, it is always a good idea to test your options first. After all, nothing beats firsthand experience. That's important whether you're looking for a quality running shoe...

The ZEISS VISALIS 500 Family Release 2.0

... or for a quality phaco system – like those of the VISALIS® 500 Family from ZEISS. Once you've tried one, you'll see why. Equipped with the new APM® (Advanced Power Modulation), ZEISS VISALIS S500 and ZEISS VISALIS V500 create the basis for:

- > Reduction in phaco energy*
- > Capturing followability*
- > Superior cutting efficiency*
- > Improved chamber stability*

It's superior phacoemulsification efficiency you simply have to experience for yourself.*

Experience the difference.



ZEISS VISALIS S500

ZEISS VISALIS V500

* Customer survey on file
Data on file

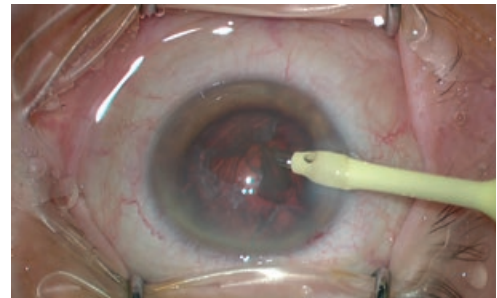
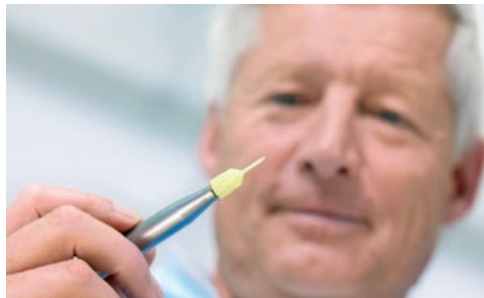


APM
follow

Live your skills

ZEISS VISALIS 500 Family phacoemulsification systems incorporate a series of functions designed to optimize phaco efficiency. Case in point: the new APM.

APM is an automated pulse shaping modulation technology that combines burst and pulse ultrasound energy into one modulation pattern.



Reduction of phaco energy

On the whole, APM lowers the measured effective phaco time (EPT) by as much as 73%.*

Capturing followability

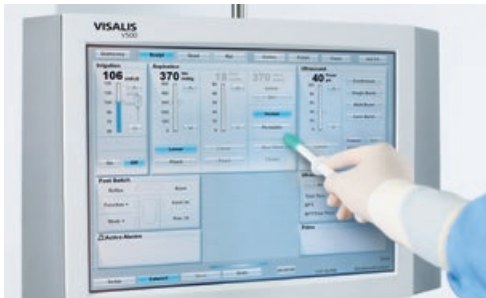
Its capturing followability attracts and continuously engages nuclear fragments on the phaco tip without repulsion.*

Superior cutting efficiency

APM provides the efficiency of the burst to impale the nucleus and the speed of pulse to remove the quadrant.*

Improved chamber stability

In addition, APM accelerates cataract removal and improves anterior chamber stability by 32%.*



Hot swap flexibility

During the procedure, you can flexibly switch between the peristaltic and venturi pump, as needed.

Facilitated cataract procedures

Two vacuum levels allow precise aspiration control. The foot control panel supports true dual linear control. MICS capability enables incisions as small as 1.8 mm.*

Modern space-saving design

With their small, compact footprint, ZEISS VISALIS 500 Family systems can even be operated in tight, narrow OR suites.

Controlled fluidic response

The choice of gravity/pressurized/combined irrigation allows optimal adaptation to individual surgeon preferences. In addition, the rise-time control of the peristaltic pump features a user-selectable venturi effect, enabling fast vacuum buildup.*

** Customer survey on file
Data on file
EPT ~ phaco energy*



A resounding endorsement from leading ophthalmic surgeons

Prof. Körber, MD
Augen-OP-Centrum,
Köln, Germany

"I am very impressed about the ease with which the APM emulsified a very dense brunet cataract without any chatter and complete chamber stability. It was convincing to see the patient with clear cornea and good visual acuity one day post surgery. The VISALIS V500 are very stable and easy to get used to. The learning curve is very short."

"The reduction in EPT for all types of cataract has really positively surprised me."

Dr. Talal Ali, MD
Ögonläkargruppen
Odenplan,
Stockholm, Sweden

Dr. Keiki R. Mehta, MD
The Mehta International
Eye Institute,
Mumbai, India

"Half my joy of doing phaco is over as the nucleus just vanishes. Total speed of surgery is incredibly quick with the APM in comparison to my Infiniti Vision System which I have been using as the gold standard, now with APM VISALIS V500 is my preferred choice."

Dr. Pierre Bouchut, MD
Clinic Saint Louis,
Bordeaux, France

"I have been using the VISALIS V500 for over a year now and with the new release the fluidics stability is even better. The new Vac2 control supports my technique. I get everything that I expect from my phaco machine."

"As I changed to the APM, my patients, most of whom have very hard cataracts, have been very satisfied and I am now more relaxed during surgery thanks to the followability, chamber stability and ease with which the hard nucleus is removed."

Dr. Nagendra Prasad, MD
Buddha Eye Care &
Laser Centre,
Patna, India

Dr. Gonzalo Bernabeu, MD
Clinica Vallés of Alcala
de Henares,
Madrid, Spain

"For me the best phaco I have used, for its fluidics and its incredible chamber stability that support a very safe surgery."

Dr. Jose Manuel Larrosa, MD
Hospital Universitario
Miguel Servet of
Zaragoza, Spain

"APM avoids chattering completely, ensuring a safe capsule even in a hard nucleus, which is as an advantage. It also reduces phaco energy and is an ideal choice for phaco emulsification."

"The APM system, customizing the on-off time, the amplitude and the frequency of the ultrasonic shot made our surgical procedures more predictable, efficient and safe for each surgeon of my team, from beginners to experts. The optimization of the emission of ultrasounds allows a terrific reduction of post-op corneal edema in hard cataracts."

Dr. Ettore Destro, MD
Istituto Clinico Città Studi,
Milan, Italy

Saving you time

ZEISS VISALIS 500 Family systems provide reliable support throughout the day. It's superior phaco efficiency that saves time in many ways.*



Easy to set up

One cassette for both pumps supports combined cataract and retina surgery. Easy to set up, the systems provide fast access to all key functions and connections. The individual priming concept further shortens procedure steps while simplifying overall workflow.

Easy-as-pie GUI

The simple, quick-to-learn operating functions of the graphic user interface are virtually self-explanatory.

Smart user interaction

ZEISS VISALIS 500 Family systems adapt seamlessly to your individual preferences and surgical techniques.

Always ready to go

Preferred system configurations can be preprogrammed for up to 30 users and 60 different programs at the push of a button.

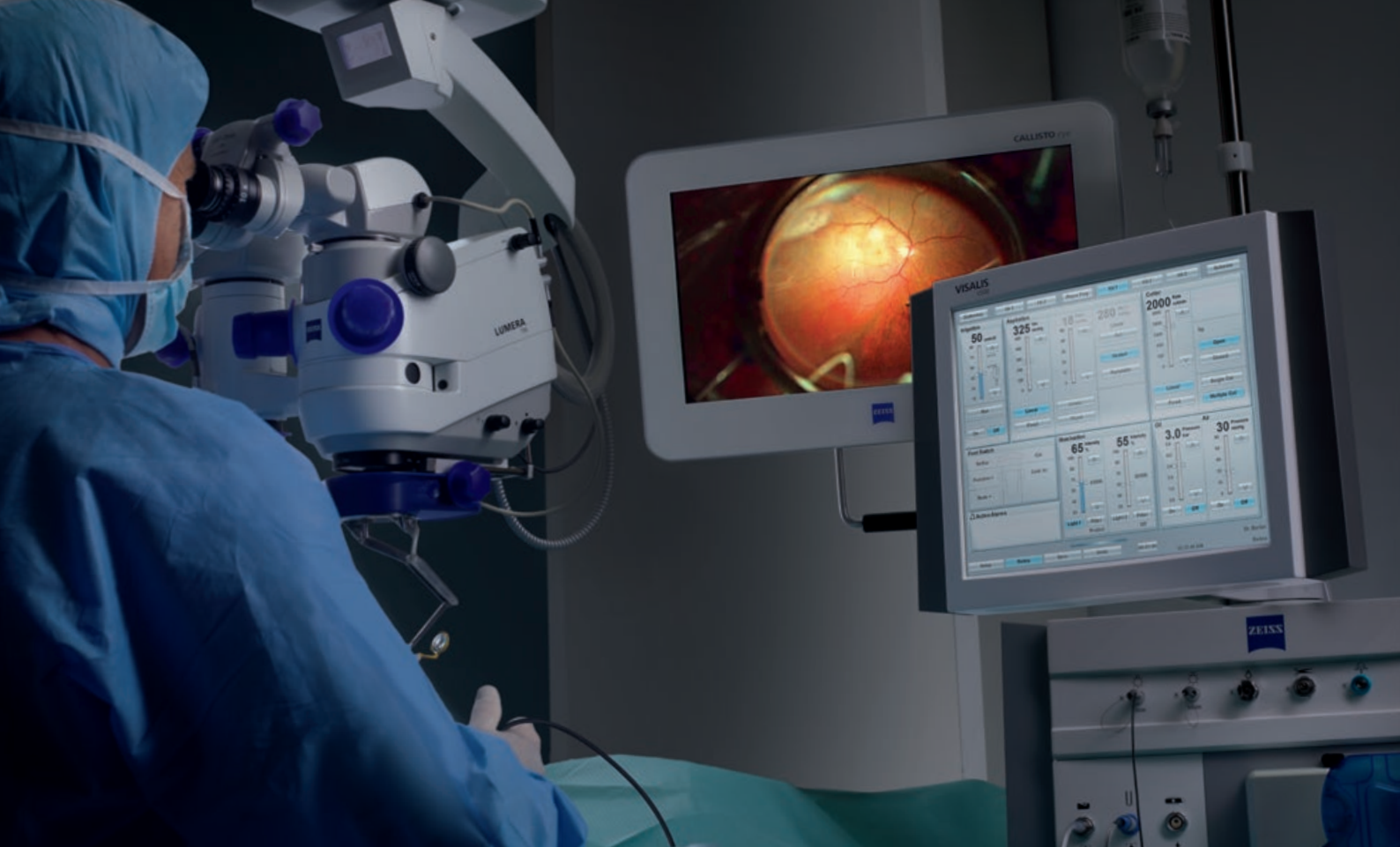
Prepared for seamless integration

Designed to work within ZEISS Cataract Suite to support a seamless cataract surgery.

Vitreo-retinal upgrade

An upgrade to perform posterior segment procedures and broaden your surgical capabilities is possible at any time.

** Data on file*



ZEISS VISALIS V500

The modular phaco and vitrectomy system

In addition to premium cataract technologies, ZEISS VISALIS V500 features leading posterior vitrectomy functions – eliminating the need for external modules and saving space.

Leading low flow/ vacuum-controlled fluidics

Cutting rates up to 4000 cuts/min allow precise operation close to the retina. The cutter's asymmetrical duty cycle further optimizes aspiration flow.

Improved fluidics efficiency

Newly developed algorithms enable enhanced fluidics, vitreous cutting and aspiration efficiency.

Maximum one-touch IOP

ZEISS VISALIS V500 supports both gravity and pressurized advanced irrigation. Pressure adjustment is easy. In case of retinal bleeding, a key automatically activates maximum irrigation.

Designed for retina procedures

The dual peristaltic and venturi pump with hot swap capability facilitates the low flow or high cut-rate techniques while working close to the retina. The aspiration and cutting rate can be controlled independently with the footswitch.

Dual illumination concept

The dual lighting system features two high-efficiency Xenon (HID) lamps with distinct color temperature levels. In addition to IR, UV and selectable retinal protection filters, it also incorporates a green filter. Two optical fibers can be used simultaneously without performance loss.

Wide range of accessories

For additional surgical precision and convenience, ZEISS offers a broad range of accessories, including single-use and reusable accessories.

When you experience the difference of superior phaco efficiency.

ZEISS VISALIS 500 FAMILY



// PRECISION
MADE BY ZEISS

Technical data

VISALIS 500 Family from ZEISS

Release 2.0

ZEISS VISALIS			S500	V500
Basics				
Height	260 cm (IVP extended) 211 cm (IVP retracted)	Input voltage 100 - 240V (+/-10%)	■	■
Width x depth	51 cm x 50 cm	Fuse T 6-3A – H 250 V	■	■
Weight	94 kg	Input pressure 5 - 8 bar	■	■
Phacoemulsification				
Handpiece type	4 piezoelectric crystals, approx. 40 kHz; stroke from 0 to 100µm		■	■
Surgery modes	Fixed or linear control from 0 to preset of the U/S power via system footswitch		■	■
U/S mode	Continuous, pulse, burst, advanced power modulation (APM)		■	■
Irrigation / Aspiration				
Gravity fed	Electrically adjustable IV pole		■	■
Combined fed	Pressurized air into BSS bottle		■	■
Inflation pressure	From 15 to 80 mmHg		■	■
Aspiration pump type	Peristaltic & Venturi		■	■
Vacuum/Flow rate range	Vac 1 and Vac 2 5 to 600 mmHg / 2 to 60 cc/min (peristaltic pump only)		■	■
Surgery mode	Fixed or linear control from 0 to preset of the flow and/or vacuum level via system footswitch, aspiration rise time 0.5 to 12 sec. in the fixed control mode		■	■
Diathermy				
Type	Bipolar generator; 2 MHz, 9 W (200 Ohm load)		■	■
Handpiece type	Bipolar micro-forceps, thin bipolar pencils, intraocular diathermy		■	■
Vitrectomy				
Handpiece type	Pneumatically powered guillotine cutter		■	■
Cutting rate	From 60 to 1600 cuts/min (anterior)		■	■
	From 60 to 4000 cuts/min (posterior)		■	■
Actuating medium	Pressurized air from external source with operating pressure 220 kPa (2.2 bar)		■	■
Surgery mode	Fixed or linear control from 60 to preset value of cut rate via system footswitch		■	■
Scissors				
Handpiece type	Pneumatically powered cutter		■	■
Cutting mode & rate	Horizontal scissors; from 60 to 320 cuts/min		■	■
Actuating medium	Pressurized air from external source with operating pressure 200 kPa (2 bar)		■	■
Illumination				
Type	Two independent light sources, HID xenon lamp, light 1: 4300 K; light 2: 5000 K		■	■
Intensity adjustment	16 steps, motorized aperture		■	■
Filters	User selectable green filter, IR-UV blocking filter		■	■
	Selectable retinal protection filter (blue barrier filter)		■	■
Tamponade				
Air injection			■	■
Pressure source/injection pressure	Integral rotary fan compressor / from 5 to 80 mmHg		■	■
Silicone oil injection			■	■
Pressure source/injection pressure	Pressurized air from external source / from 40 to 500 kPa (0.4 to 5 bar)		■	■

CE 0297



Carl Zeiss Meditec AG
Goeschwitzer Strasse 51–52
07745 Jena
Germany
www.zeiss.com/visalis500
www.zeiss.com/med/contacts

EN_32_010_111411 Printed in Germany CZ-XZ016 International edition: Only for sale in selected countries.
The contents of the brochure may differ from the current status of approval of the product or service offering in your country.
Please contact our regional representative for more information. Subject to change in design and scope of delivery and due to ongoing technical development.
VISALIS and APM are either trademarks or registered trademarks of Carl Zeiss Meditec AG or other companies of the ZEISS Group in Germany and/or other countries.
© Carl Zeiss Meditec AG, 2016. All rights reserved.