

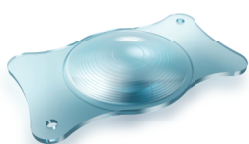
# ZEISS AT LARA 829MP preloaded

## ZEISS AT LARA toric 929M/MP preloaded

### Technical Specifications

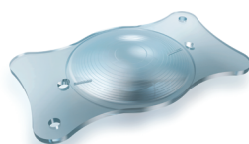


Seeing beyond



#### AT LARA® 829MP preloaded

Optic Design	Diffractive, aspheric, Depth of Focus Extensions: +0.95 D and +1.9 D	
Material	Hydrophilic acrylate (25 % water content) with hydrophobic surface properties	
Optic Diameter	6.0 mm	
Total Diameter	11.0 mm	
Haptic Angulation	0°	
Lens Design	Single-piece MICS	
Incision Size	1.8 mm	
Company Labeled A-Constant <sup>1</sup>	118.5	
Diopter Range	-10.0 to +32.0 D, 0.5 D increments	
ACD	5.20	
Refractive Index	1.46	
Implantation in	Capsular Bag	
Injector/Cartridge Set <sup>2</sup>	BLUEMIXS® 180	
Indications	<ul style="list-style-type: none"> <li>■ Indicated for the visual correction of aphakia secondary to the removal of the crystalline lens in patients with cataract</li> <li>■ Also indicated for non-cataractous, presbyopic patients who seek greater independence from glasses for intermediate and/or near distances</li> </ul>	



#### AT LARA® toric 929M/MP preloaded

Optic Design	Diffractive, bitoric, aspheric (aberration neutral), Depth of Focus Extensions: +0.95 D and +1.9 D	
Material IOL	Hydrophilic acrylate (25 % water content) with hydrophobic surface properties	
Optic Diameter	6.0 mm	
Total Diameter	11.0 mm	
Haptic Angulation	0°	
Lens Design	Single-piece, bitoric, MICS	
Incision Size	1.8 mm	
Company Labeled A-Constant <sup>1</sup>	118.5	
Diopter Range	Spherical Equivalent (SE) Cylinder	-4.0 to +32.0 D, 0.5 D increments <sup>3</sup> +1.0 D to +12.0 D, 0.5 D increments <sup>3</sup>
ACD	5.20	
Refractive Index	1.46	
Implantation in	Capsular Bag	
Injector/Cartridge Set <sup>2</sup>	BLUEMIXS® 180	
AT LARA toric 929M/MP	VISCOJECT-BIO 2.2	
Indications	<ul style="list-style-type: none"> <li>■ Indicated for the visual correction of aphakia secondary to the removal of the crystalline lens in patients with cataract</li> <li>■ Also indicated for non-cataractous, presbyopic patients who seek greater independence from glasses for intermediate and/or near distances</li> <li>■ ZEISS toric IOL are also indicated for the correction of regular corneal astigmatism</li> </ul>	

<sup>1</sup> For optimized A Constants and ACD Constants refer to IOLCon: [www.iolcon.org](http://www.iolcon.org)

<sup>2</sup> Please refer to our web page for the most up-to-date references: [www.zeiss.com/injectors](http://www.zeiss.com/injectors)

<sup>3</sup> The preloaded AT LARA toric 929MP is available in the diopter range: spherical equivalent -8.0 to +32.0 D, cyl. +1.0 D to +4.0 D. The non-preloaded AT LARA toric 929M is available in the diopter ranges: spherical equivalent -4.0 D to +34.0 D, cyl. +4.5 D to +12.0 D. Further preselected SE/cylinder combinations are available above and below the stated SE range.

**CE** 0297

AT LARA 829MP  
AT LARA toric 929MP/  
AT LARA toric 929M  
BLUEMIXS 180 Injector



**Carl Zeiss Meditec AG**  
Goeschwitzer Strasse 51–52  
07745 Jena  
Germany  
[www.zeiss.com/lara](http://www.zeiss.com/lara)  
[www.zeiss.com/med/contacts](http://www.zeiss.com/med/contacts)

**en-OUS\_32\_022\_016811** Printed in Germany. CZ-VII/2023 International edition: Only for sale in selected countries.  
The contents of the brochure may differ from the current status of approval of the product or service offering in your country. Please contact our regional representatives for more information.  
Subject to changes in design and scope of delivery and due to ongoing technical development. AT LARA toric and BLUEMIXS are either trademarks or registered trademarks of Carl Zeiss Meditec AG or other companies of the ZEISS Group in Germany and/or other countries. VISCOJECT is a trademark of Medical (CE 0482).  
© Carl Zeiss Meditec AG, 2023. All rights reserved.