

# Efficient photocoagulation for your retina workflow

## ZEISS VISULAS green

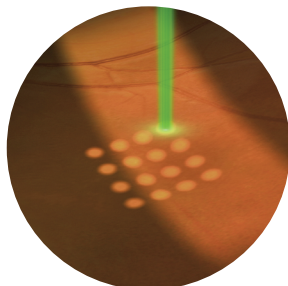


The photocoagulator VISULAS® green from ZEISS turns daily clinical routine into a more convenient and efficient treatment experience.



### Accurate operation

The premium optics of the LED laser slit lamps ensure high visibility of the treatment area. The true-to-color physician's safety ClearView filter remains active to ensure a safe treatment for the operator. Experience navigating with fingertip precision thanks to the electronic micromanipulator.



### Optimized illumination of treatment area

Aiming beam and treatment beams remain coaxial in the center of the illumination for comfortable and safe treatment even in the periphery.



### Speed up treatment and reduce pain perception

The ZEISS VISULAS green comfort model, with VITE option, includes multispot photocoagulation to help reduce treatment times. The short multi-spot pulse durations create smaller lesions to decrease the pain perception.

*One of the key benefits of ZEISS VISULAS green is the connection to the FORUM<sup>1</sup> data management solution. This allows you to seamlessly integrate laser therapy into the ZEISS Retina Workflow ensuring high level of flexibility and efficiency throughout the entire process. You will be able to access and review your patient's data prior to examination, treatment, and follow-up all in one place.*



For full list of technical specifications, application videos, reviews and more, visit [www.zeiss.com/visulasgreen](http://www.zeiss.com/visulasgreen)

<sup>1</sup> Connectivity to ZEISS FORUM requires an optional license and VISUCONNECT 600.

# Technical specifications

## ZEISS VISULAS green

<b>ZEISS VISULAS green</b>	
Laser source	Frequency doubled Nd:YVO <sub>4</sub> , diode-pumped, cw
Laser wavelength of therapy beam	532 nm
Pulse duration	<ul style="list-style-type: none"> <li>Single pulse: 10 ms to 2,500 ms, cw</li> <li>Multi spot: 10/20/30/40/50 ms</li> </ul>
Pulse interval	From 10 to 6,000 ms (adjustable)
Maximum power at cornea	1,500 mW
Laser ports	Standard: 1 Optional: 2 (DualPort)
Data output	PDF to USB drive Optional: PDF report to ZEISS FORUM <sup>1</sup> (with ZEISS VISUCONNECT 600)
Laser class	Class 4 (in accordance with IEC 60825-1)
Dimensions	201 mm (H) × 230 mm (W) × 290 mm (D)
Weight	≤ 8 kg

### Laser Slit Lamp

	<b>LSL green classic</b>	<b>LSL green comfort</b>
LED illumination	5.6 V, 2 W brightness continuously adjustable	5.6 V, 2 W brightness continuously adjustable
Slit width	0 to 14 mm (continuously)	0 to 14 mm (continuously)
Slit height	1/3/5/9/14 mm	1/3/5/9/14 mm
Slit image rotation	0°/±45°/90°	0°/±45°/90°
Laser beam guidance	Interlaced with slit illumination system	Interlaced with slit illumination system
Aiming beam	Diode, 620 nm to 650 nm, max. 1 mW at the cornea	Diode, 620 nm to 650 nm, max. 1 mW at the cornea
Physician safety filter	ClearView® - true-to-color, fixed	ClearView® - true-to-color, fixed
Magnification	8×/12×/20×	5×/8×/12×/20×/32×
Micromanipulator	Not available	Servo-electric
Multi-spot license "VITE"	Not upgradeable	Upgradeable
Integrated display	InsightView® optional	InsightView® integrated
Pupil distance setting range	55 mm to 78 mm	55 mm to 78 mm
Adjustment range for the observer's refractive error	-5 D to +5 D	-5 D to +5 D
Device class	2 in accordance with ISO 15004-2	2 in accordance with ISO 15004-2
Electrical power supply	Supplied by laser console	Supplied by laser console
Weight	≤ 12.5 kg	≤ 12.5 kg

### Control Panel

Weight	≤ 2 kg
--------	--------

### Optional

- Panel PC (SL Workstation)
- ZEISS SL Imaging Solution
- Standard foot switch
- TouchControl® foot switch
- Instrument table IT 1060.i/IT 760.i
- ZEISS FORUM license

### Applicators

- LSL green comfort laser slit lamp
- LSL green classic laser slit lamp
- LIO VISULAS green laser indirect ophthalmoscope
- Endoprobes

<sup>1</sup> Connectivity to ZEISS FORUM requires an optional license