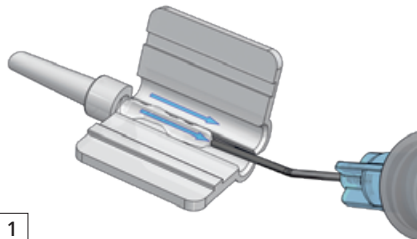


AT.Shooter A1-2000 with VISCOJECT-BIO 1.8 Cartridge Set

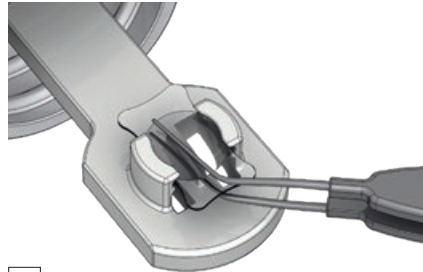
Handling instructions for non-preloaded ZEISS MICS IOLs



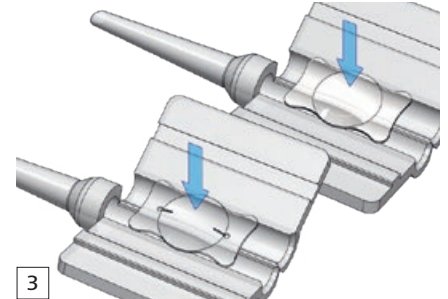
Seeing beyond



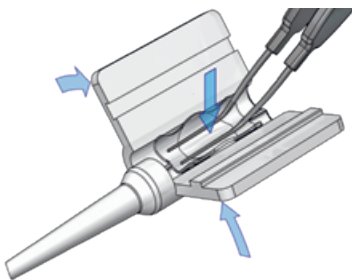
1
Place a small amount of OVD* in the cartridge tip. Place a line of OVD in each channel of the cartridge.
Do not touch the front tip of the cartridge.



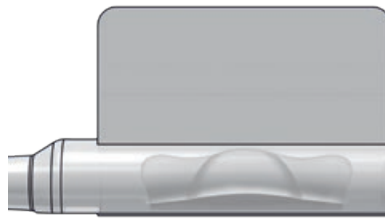
2
Pull the lens gently from its holder using a forceps with fine tips.
Do not let the IOL dry up.
Do not use the fluid from the bottle for ocular irrigation.



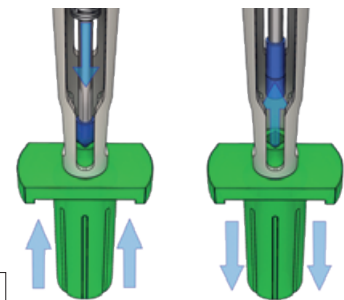
3
Place the lens in the center of the opened cartridge. For high diopter toric IOLs, mind the meridian marks.



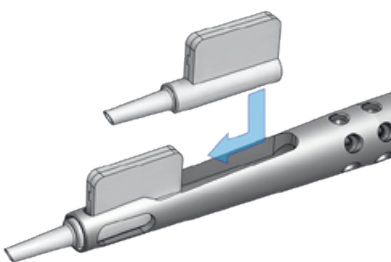
4
Maintain the IOL in place with the folding forceps while closing the cartridge. Close the cartridge until you hear a click.



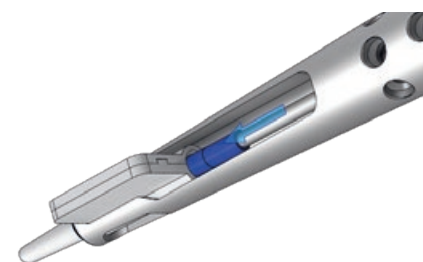
5
Control the position of the lens within the channel of the closed cartridge. Haptic must be freely movable.



6
Mount the tip holder onto shooter tip. Insert the plunger into the recess of the blue silicone tip and remove the tip from its holder by retracting the plunger.



7
Place the cartridge into the loading deck of the shooter and push it forward.



8
Gently push the plunger with the blue silicone tip mounted on it straight into the cartridge channel and start to push the lens forward.



9
Check the correct positioning of the lens. Gently push forward the lens until it becomes visible in the tip of the cartridge. Start implantation of lens.

Please refer to our web site for the most up-to-date references.



VISCOJECT™- BIO 1.8 Cartridge Set



AT.Shooter A1-2000

*Carl Zeiss Meditec recommends the use of ZEISS OVDs.



0297

AT.Shooter A1-2000



0482

VISCOJECT-Bio 1.8 Cartridge Set



Carl Zeiss Meditec AG

Goeschwitzer Strasse 51–52

07745 Jena

Germany

www.zeiss.com/injectors



Medicel AG

Dornierstrasse 11

9423 Altenrhein

Suíça

www.zeiss.com/injectors

www.zeiss.com/med/contacts