

Time savings with the ZEISS Cataract & Premium Cataract Workflow



Seeing beyond

Large study with 430 workflows* in a hospital chain

Source



Title

Time Savings Using a Digital Workflow versus a Conventional for Intraocular Lens Implantation in a Corporate Chain Hospital Setting.



Authors

Felix Rombold, Christoph Niederdelmann, Riccardo Pariti & Bader Khayat



Publication

[Clinical Ophthalmology \(2024\): 113-119. DOI:10.2147/OPHTH.S439930](#)

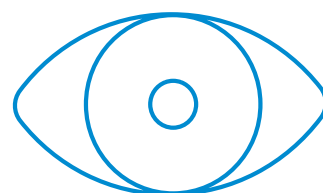
Methodology & Setup

Setting



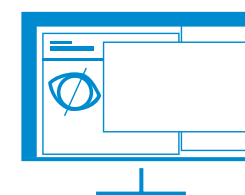
Multi-site in a large Corporate Hospital Chain in Germany

Sample Size



Prospective study with **430 cataract workflows***

Added digital ZEISS solutions



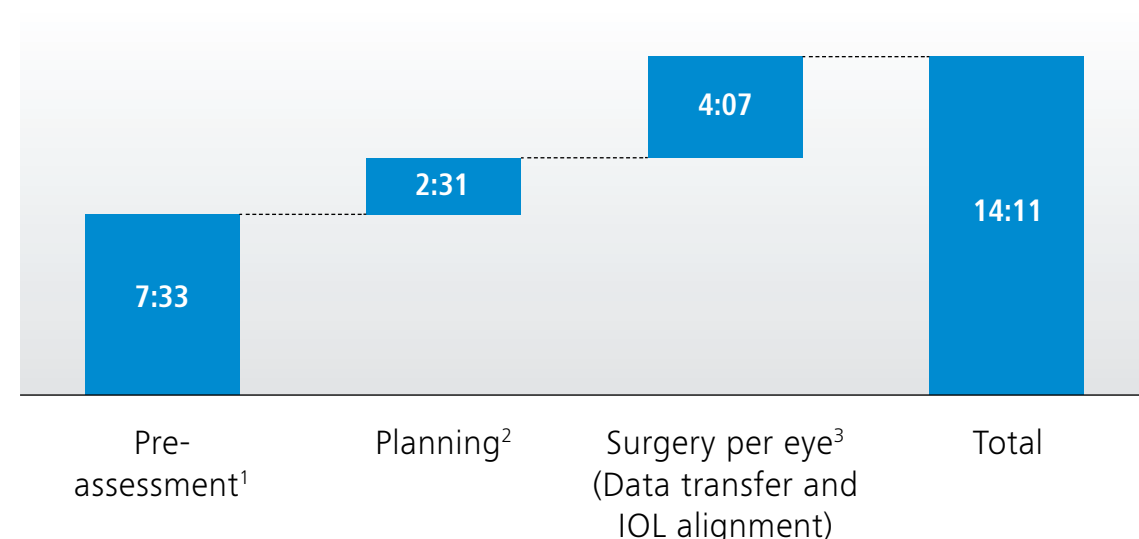
- ZEISS FORUM
- ZEISS EQ Workplace
- ZEISS CALLISTO eye

Main evaluation criteria

- **Comparison** of mean process times and variability for a digital workflow versus existing conventional workflow
- **Time measurements of process steps along the cataract workflow:** Preoperative assessments, planning (calculation of IOL power, data transfer/export for surgery to OR), surgery (data import on operating devices in OR and IOL axis marking and alignment)

Results

Time savings per workflow per process step (min:sec)



Time savings per workflow

14:11 min for toric IOLs
10:04 min for multifocal & EDoF IOLs
7:33 min for monofocal IOLs⁴

For further details see publication

¹ For all IOL types, ² Planning – EQ Workplace implemented for toric or multifocal IOLs only, ³ Surgery – for toric IOLs only, ⁴ Monofocal aspheric IOLs

*Workflow includes: Pre-op measurements and planning for both eyes, surgery for one eye per patient only

Details presented at ESCRS Sep 10th, 2023 by F. Rombold, "Impact Of Digital Cataract Workflow On Productivity"