



**OPMI LUMERA 300 from ZEISS**  
Best-in-class visualization

With  
BrightFlex®  
LED illumination



Seeing beyond



## The ZEISS OPMI LUMERA 300

Your entry into the LUMERA world

The OPMI LUMERA® family from ZEISS represents excellence in optics and illumination, with a reputation for delivering high-quality visualization technology. The ZEISS OPMI LUMERA 300 with BrightFlex® LED illumination delivers on this promise. It is your entry into the LUMERA world.

### Your key to best-in-class visualization:

#### Excellent LUMERA Optics

Apochromatic optics, less stress, independent assistant's microscope, brilliant view of the retina

#### Exceptional Illumination

BrightFlex for brilliant red reflex, individually adaptable illumination

#### Outstanding Quality

Superior components, hassle-free design, maximum system uptime



#### Outstanding Quality

Superior optical and mechanical components

#### LUMERA Optics

Unmatched ZEISS optics for exceptional clarity, contrast, and light

#### Outstanding Quality

Fully integrated HD camera for ease of display (optional)

#### Exceptional Illumination

BrightFlex LED illumination for a brilliant red reflex

#### LUMERA Optics

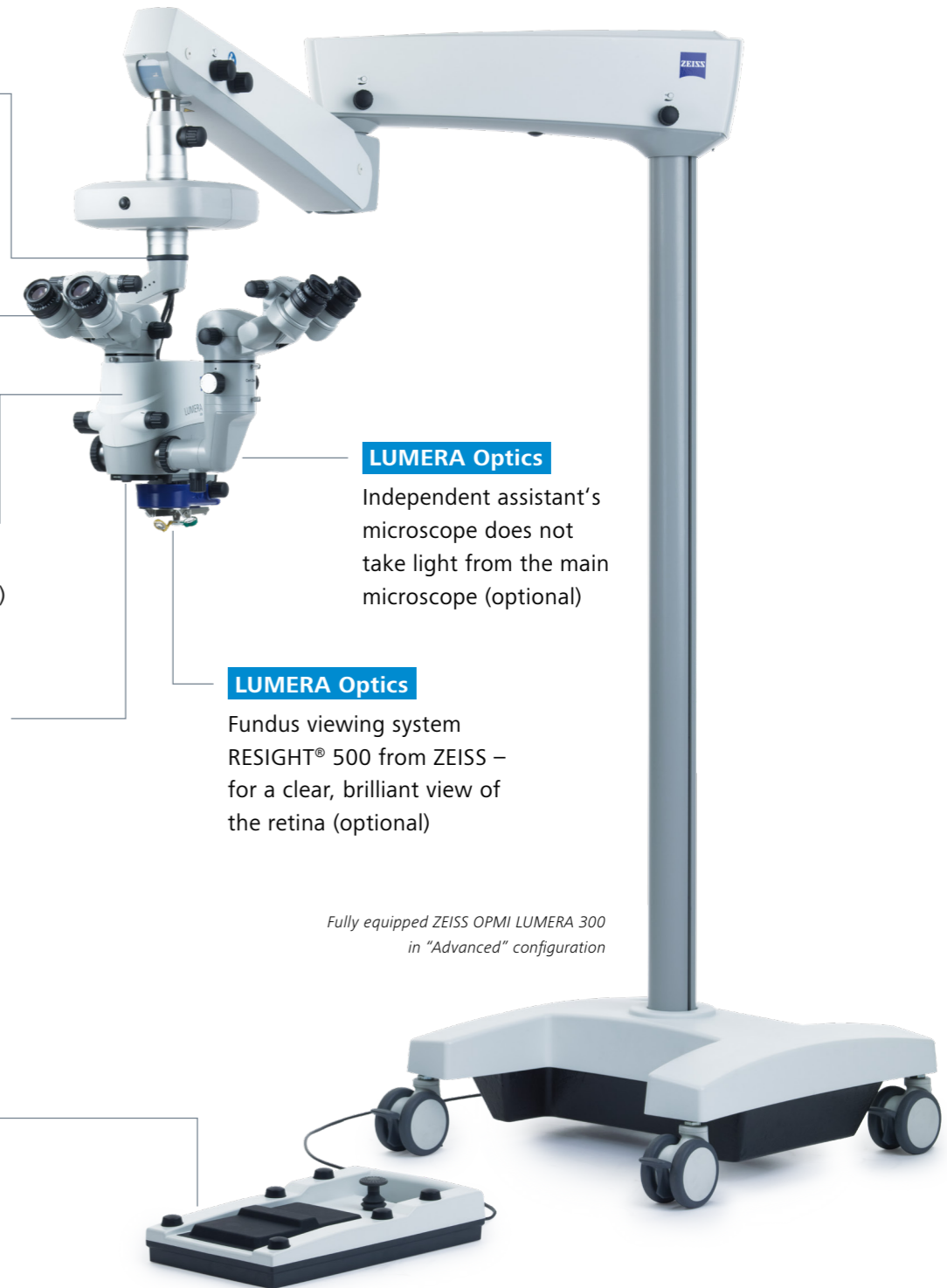
Independent assistant's microscope does not take light from the main microscope (optional)

#### LUMERA Optics

Fundus viewing system RESIGHT® 500 from ZEISS – for a clear, brilliant view of the retina (optional)

#### Outstanding Quality

Ergonomic foot panel for precise control



Fully equipped ZEISS OPMI LUMERA 300 in "Advanced" configuration



## Best-in-class visualization: Excellent **LUMERA Optics**

### Superior contrast, resolution, clarity

Apochromatic optics provide an exceptional view with high contrast and outstanding resolution. The ZEISS OPMI LUMERA 300 delivers clarity of detail that is unparalleled in its class.

### Less stress for your patients

With outstanding light transmission, the ZEISS OPMI LUMERA 300 results in significantly reduced light exposure for your patients, leading to less stress on the eye.

### Independent assistant's microscope

The ZEISS OPMI LUMERA 300 features an optional, fully independent assistant's microscope that requires no light from the main microscope.

### Brilliant view of the retina

The optional ZEISS RESIGHT 500 fundus viewing system provides a clear visual impression during retina surgeries.



## Best-in-class visualization: Exceptional **illumination**

### BrightFlex for brilliant red reflex

The variable electronic LED illumination technology BrightFlex from ZEISS delivers a brilliant red reflex for more confidence in cataract surgeries.

### Individually adaptable illumination

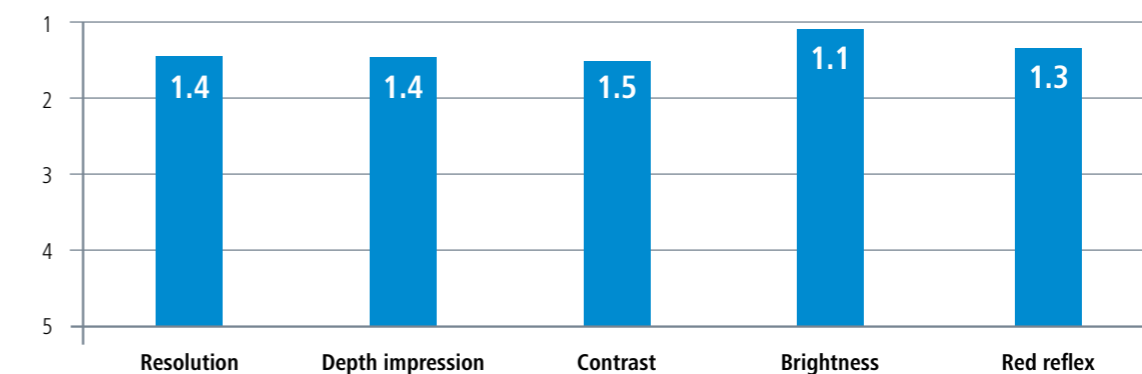
BrightFlex allows you to adapt the brightness of the red reflex to your individual needs – unique in this class.

The use of the HaMode™ filter allows surgeons who prefer halogen to quickly switch to a light spectrum equivalent to halogen.

## Best scores from specialists

The ZEISS OPMI LUMERA 300 was put to the test by 24 European and Asian cataract and retina specialists. All surgeons rated the ZEISS OPMI LUMERA 300 in the categories surveyed within the highest score class: 1.5 or better.\*

Score (1 = very satisfied; 5 = totally dissatisfied)



\* Data on file



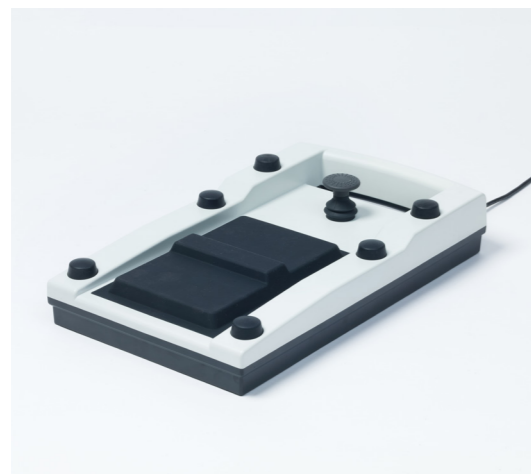
## Best-in-class visualization: Outstanding **Quality**

### Superior optical and mechanical components

The ZEISS brand has always stood for quality products that live up to the highest German engineering standards. The ZEISS OPMI LUMERA 300 is no exception to this rule. The superiority of the optical and mechanical components means you have the most reliable partner at your side.

### Hassle-free design

Assistant's microscope, HD camera, ZEISS RESIGHT 500 fundus viewing system: all parts and accessories are fully integrated, regardless of the configuration. Plus by using the convenient, ergonomic foot panel, you can concentrate on your surgery without distraction or interruptions.



Ergonomic foot panel

### Maximum system uptime

The LED illumination of the ZEISS OPMI LUMERA 300 has a lifespan up to 1,000 times longer than that of the halogen bulbs used in competing surgical microscopes – for significantly reduced running costs and interruption-free surgeries.

And with OPTIME service packages from ZEISS extending from preventive to corrective maintenance, as well as spare parts, you can count on maximum system uptime and convenience.



Experience outstanding quality

## Technical specifications and configurations

### OPMI LUMERA 300 from ZEISS

	Basic	Standard	Advanced
<b>Optic</b>			
Focus range	48 mm	48 mm	48 mm
Objective lens	f=200 mm	f=200 mm	f=200 mm
Wide-field eyepiece	12.5×	12.5×	12.5×
Magnification	Manual 5-step magnification changer	Motorized zoom	Motorized zoom
Binocular tube	45° inclined tube f=170 mm	45° inclined tube f=170 mm	180° swivel tube f=170 mm
Apochromatic optics	●	●	●
Integrated assistant interface	○	●	●
<b>Illumination</b>			
BrightFlex illumination	●	●	●
LED light source	●	●	●
Filters	Color enhancement, HaMode, blue-blocking		
<b>Operation</b>			
Wired foot control panel	●	●	●
X-Y coupling (Range 60 × 60 mm)	○	○	●
S200 floor stand	Cataract version	Cataract version	Cataract/retina version
<b>Accessories</b>			
Integrated HD camera (1080p)	○	○	○
Assistant package (Assistant's microscope, magnification changer, 45° inclined tube)	○	○	○
Retina package (Assistant's microscope, magnification changer, 110° inverter tube, RESIGHT 500 fundus viewing system starter set)	–	–	○
<b>Service</b>			
OPTIME service package	○	○	○

○ Option ● Standard



**Carl Zeiss Meditec (Suzhou)  
Co., Ltd.**

4F, No.26 Wu Sheng Road, SIP  
215126 Suzhou  
China  
[www.zeiss.com/lumera300](http://www.zeiss.com/lumera300)



**Carl Zeiss Meditec AG**

Goeschwitzer Strasse 51–52  
07745 Jena  
Germany  
[www.zeiss.com/lumera300](http://www.zeiss.com/lumera300)

**en-INT\_32\_010\_01831** CZ-XI/2024 International edition: Only for sale in selected countries.

The contents of the brochure may differ from the current status of approval of the product or service offering in your country. Please contact our regional representatives for more information.

Subject to changes in design and scope of delivery and due to ongoing technical development. OPMI LUMERA, BrightFlex, HaMode and RESIGHT are either trademarks or registered trademarks of Carl Zeiss Meditec AG or other companies of the ZEISS Group in Germany and/or other countries.

© Carl Zeiss Meditec AG, 2024. All rights reserved.