

The compact workstation for your retina and cataract workflows

ZEISS VISULAS combi



Ideal for a wide variety of applications, the VISULAS® combi from ZEISS is the first fully integrated therapeutic laser workstation offering photodisruption and photocoagulation technology without compromise. The laser slit lamp is the joint applicator for various applications. No need for time-consuming changes or relocation of the patient.



Workflow integration and innovative features

to speed up your procedures



All VISULAS features and benefits without compromise

The ZEISS VISULAS combi offers the possibility to have the features and benefits of VISULAS green and VISULAS yag in one space-saving workstation.



InsightView display and TouchControl center switch

The integrated InsightView® display shows all relevant treatment parameters in the eyepiece of the ZEISS laser slit lamp. Parameter values can be adjusted directly at the slit lamp without taking your eyes off the ocular.



ZEISS laser slit lamp with premium optics

The laser slit lamp offers a convenient treatment experience with LED illumination, ClearView® safety filter, and integrated InsightView® display.



Digital treatment reports and documentation in ZEISS FORUM¹

Access diagnostic reports and images via FORUM from ZEISS to prepare for treatment or for consultations with your patients, their relatives or with peers.



¹ Connectivity to ZEISS FORUM requires an optional license and VISUCONNECT 600.

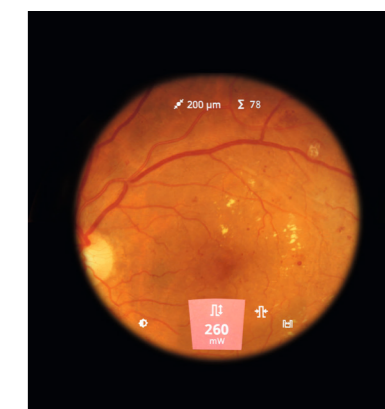


The integration of ZEISS VISULAS combi workstation into the ZEISS Workflows provides high level of flexibility and efficiency.¹

Technical specifications

ZEISS VISULAS combi

	VISULAS combi – Photocoagulation	VISULAS combi – Photodisruption
Laser source	Frequency doubled Nd:YVO ₄ , diode-pumped, cw	Nd:YAG laser: flash lamp-pumped, Q-switched
Laser wavelength of therapy beam	532 nm	1064 nm
Pulse duration	<ul style="list-style-type: none"> Single pulse: 10 ms to 2,500 ms, cw (max. 180 s) Multi spot: 10/20/30/40/50 ms 	< 4 ns (typically 2 ns to 3 ns)
Pulse interval	From 10 to 6,000 ms (adjustable)	-
Pulse mode	-	<ul style="list-style-type: none"> Single pulse: 9.0 mJ to 13.0 mJ at max. 2.5 Hz Double pulse: 18.0 mJ to 28.0 mJ at max 1.0 Hz Triple pulse: 29.0 mJ to 45.0 mJ at max 1.0 Hz
Laser beam guidance	Interlaced with slit illumination system	-
Energy attenuation	-	22 levels
Data output	PDF to USB drive. Optional: PDF report to ZEISS FORUM ¹ (with ZEISS VISUCONNECT 600)	
Laser class	Class 4 (in accordance with IEC 60825-1)	
Dimensions	201 mm (H) x 230 mm (W) x 290 mm (D)	
Weight	≤ 8 kg	
Laser Slit Lamp	LSL green combi	
LED illumination	5.6 V, 2 W brightness continuously adjustable	
Slit width	0 to 14 mm (continuously)	
Slit height	1/3/5/9/14 mm	
Slit image rotation	0°/±45°/90°	
Aiming beam	<ul style="list-style-type: none"> Photocoagulation: Diode, 620 nm to 650 nm, max. 1 mW at the cornea Photodisruption: Diode, 660 nm to 680 nm, 2-point/4-point (switchable) 	
Physician safety filter	ClearView® - true-to-color, fixed	
Magnification	5x/8x/12x/20x/32x	
Micromanipulator	Servo-electric	
Integrated display	InsightView® integrated	
Pupil distance setting range	55 mm to 78 mm	
Adjustment range for the observer's refractive error	-5 D to +5 D	
Device class	2 in accordance with ISO 15004-2	
Electrical power supply	Supplied by laser console	
Weight	≤ 16.0 kg	
Control Panel		
Weight	≤ 2 kg	
Optional	Applicators	
<ul style="list-style-type: none"> Panel PC (SL Workstation) ZEISS SL Imaging Solution Standard foot switch TouchControl® foot switch Instrument table IT 1060.i/IT 760.i ZEISS FORUM license 	<ul style="list-style-type: none"> LSL combi laser slit lamp LIO VISULAS green laser indirect ophthalmoscope 	



InsightView® display shows parameter values, adjustable without taking eyes off the ocular

en-US_31_022_00841 CZ-X/2024 USA edition: Only for sale in selected countries. The contents of this document may differ from the current status of approval of the product or service offering in your country. Please contact our regional representatives for more information. Subject to changes in design and scope of delivery and due to ongoing technical development. VISULAS, FORUM, TouchControl, ClearView and InsightView are either trademarks or registered trademarks of Carl Zeiss Meditec AG or other companies of the ZEISS Group in Germany and / or other countries. © Carl Zeiss Meditec AG, 2024. All rights reserved.

Carl Zeiss Meditec, Inc
5300 Central Parkway
Dublin, CA 94568
USA
www.zeiss.com/med/contacts

