

# PALM User Protocols

## Cell Culture, non-contact Laser Capture Microdissection (LCM) and Recultivation



ZEISS > ZTC dT aj Labs  
A unique service of Carl Zeiss



We make it visible.

# PALM User Protocols

## Cell Culture, non-contact Laser Capture Microdissection (LCM) and Recultivation

1	Sample preparation	3
1.1	Cultivation of adherent cells	3
1.2	Preparation of cells in suspension – Coating of DuplexDishes and FrameSlides	4
1.2.1	Poly-L-Lysin	4
1.2.2	Cell-Tak	4
1.2.3	Fibronectin	4
1.2.4	Gelatin	5
1.2.5	Laminin	5
1.3	Immunostaining of murine stem cell line P19 with $\alpha$ -SSEA-1-antibody	6
2	Improvement of visualization in live cell applications	7
2.1	Phase contrast	7
2.2	PlasDIC	7
3	Non-contact LCM	8
3.1	Holders for PALM RoboStage	8
3.2	Collection devices	8
3.2.1	CapMover	8
3.2.2	RoboMover	8
3.2.3	LiveCell Collector	8
3.3	The procedure: Non-contact LCM of live cells	9
4	Recultivation of collected live cells - clonal expansion	10
5	Time-lapse	11
6	Incubators	11
6.1	Incubator XL PALM-3 S1	11
6.2	Incubator PM PLAM S1	11
7	Optical Tweezers and PALM CombiSystem	11

## Cell Culture, non-contact Laser Capture Microdissection (LCM) and Recultivation

### 1 Sample preparation

#### 1.1 Cultivation of adherent cells

Adherently growing cells are seeded into a DuplexDish 35 (Order No. 415190-9121-000) or DuplexDish 50 (Order No. 415190-9111-000) and are cultivated as usual up to the desired cell density.

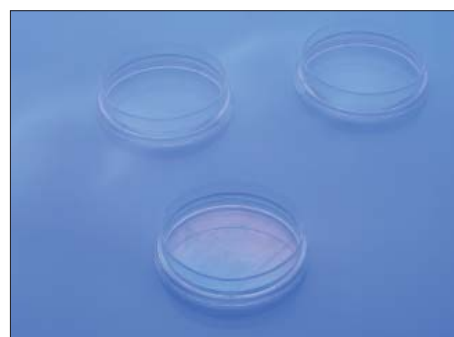
DuplexDishes are especially adapted for non-contact LCM. The growth-surface of these culture dishes is optimized for attachment of many different cell types.

Alternatively lumox® dish 35 (Sarstedt, # 94.6077.333) combined with MembraneRing 35 (Order No. 415190-9141-000) and lumox® dish 50 (Sarstedt, # 94.6077.410) with MembraneRing 50 (Order No. 415190-9131-000) can be used.

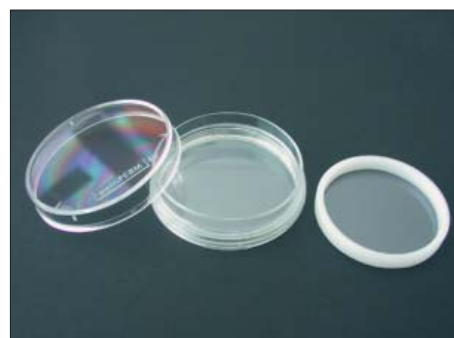
The cells are growing directly on top of the membrane in an appropriate cell culture medium including all necessary supplements. Depending on the proliferation rate of the cell type the cells are ready for laser microdissection after 1-2 days.

For certain applications adherently growing cells can also be cultivated on FrameSlides PET (Order No. 415190-9101-000).

FrameSlides are inserted into a quadriPerm cell culture plate (Greiner bio-one, # 96077307) with the membrane-side facing the bottom of the plate (ZEISS symbol visible). Cells are seeded into the cavity of the FrameSlide and covered with approximately 0.5 to 1 ml medium of choice.



*DuplexDishes*



*lumox® dish with MembraneRing*



*quadriPerm with FrameSlides*

# PALM User Protocols

## Cell Culture, non-contact Laser Capture Microdissection (LCM) and Recultivation

### 1.2 Preparation of cells in suspension – Coating of DuplexDishes and FrameSlides

Prior non-contact LCM procedure the cells in suspension have to be attached to the bottom of the dish. It is necessary to optimize the preparation protocol for each cell type. Immobilization of cells in suspension can be performed by e.g. coating of the membrane.

#### 1.2.1 Poly-L-Lysin treatment

Nearly all types of human and animal cells adhere to these polymers of basic amino acids.

**Protocol:**

- Distribute a drop of Poly-L-Lysin (0.15 % w/v, e.g. SIGMA, # P8920) on top of the membrane.
- Avoid any leakage underneath the membrane, as this might result in impairment of LCM.
- Let air-dry at room temperature.

#### 1.2.2 Coating with Cell-Tak

BD Cell-Tak (BD Biosciences, # 354240) is a specially formulated protein solution which is particularly suitable to immobilize suspension cells.

**Protocol:**

- Please follow manufacturer's protocol.

#### 1.2.3 Fibronectin

Fibronectin is an extracellular matrix for the culture of endothelial cells, fibroblasts, neurons and CHO cells. It also can be used to improve attachment of cells onto the membrane.

**Protocol:**

- Stock solution is prepared by dissolving 1 mg/ml Fibronectin in PBS.
- Filter sterilize and freeze in aliquots.
- Dilute stock solution to 50-100 µg/ml in basal medium or PBS.
- Add enough solution to distribute over the surface of the DuplexDish.
- Incubate for 30-45 minutes at room temperature.
- Remove excess of Fibronectin solution by aspiration and rinse with medium or PBS.
- Immediately add cell suspension or growth medium into the dish. Do not allow coating to dry.

# PALM User Protocols

## Cell Culture, non-contact Laser Capture Microdissection (LCM) and Recultivation

### 1.2.4 Gelatin

Gelatin is a protein produced by partial hydrolysis of collagen. It improves attachment of cells on slides and prevents cell dislocation during the laser capture microdissection procedure.

**Protocol:**

- Dissolve 10 mg Gelatin in 100 ml water (final: 0.01 % Gelatin).
- Autoclave to sterilize.
- While hot, thoroughly mix Gelatin solution.
- Add approximately 2 ml of Gelatin solution to each DuplexDish or about 1 ml to each FrameSlide, respectively.
- Leave the Gelatin solution on the membrane overnight at 4 °C, covered with lids.
- Remove Gelatin solution by aspiration
- Add sterile water.
- Dishes and slides can be stored for up to one week at 4 °C.
- Remove water immediately before use for cell culture. Do not let dishes or slides run dry before adding the cells.

### 1.2.5 Laminin

Laminin is used especially for the culture of neurons, epithelial cells, leukocytes, myoblasts and CHO cells.

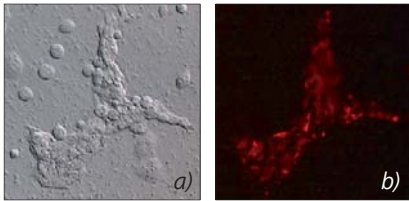
**Protocol:**

- Stock solution is prepared by following manufacturer's protocol.
- Filter sterilize and freeze in aliquots.
- Dilute stock solution to 10-100 µg/ml in basal medium or PBS.
- Add enough solution to distribute over the surface of DuplexDish or FrameSlide.
- Incubate about 8 hours at 4 °C, covered with lid.
- Remove excess of Laminin solution by aspiration and rinse with medium or PBS.
- Immediately add cell suspension or growth medium. Do not allow coating to dry.
- Coating firstly with Poly-L-Lysin or Poly-Ornithine and subsequently with Laminin may increase the concentration of bound Laminin.

# PALM User Protocols

## Cell Culture, non-contact Laser Capture Microdissection (LCM) and Recultivation

### 1.3 Immunostaining of murine stem cell line P19 with $\alpha$ -SSEA-1-antibody



a) HeLa and P19 cells grown in co-culture and visualized with PlasDIC.  
b) Very same image in the corresponding fluorescence channel.  
Only SSEA-1 expressing P19 cells showing immunostain fluorescence.

#### **Material:**

- Culture medium:  $\alpha$ -MEM supplement with 10 % fetal calf serum (FCS) and 1 % Penicillin/Streptomycin (10.000 IE/10.000  $\mu$ g/ml)
- Trypsin/EDTA solution (0.05/0.02  $\mu$ g/ml (w/v) in PBS)
- PBS pH 7,4 (without  $\text{CaCl}_2$  and  $\text{MgCl}_2$ )
- Incubation medium:  $\alpha$ -MEM with 2 % FCS
- Primary antibody: Directed against h/mSSEA-1 (IgM; R&D Systems # MAB2155)

Dilutions of anti-h/mSSEA in incubation buffer:

- 5  $\mu$ g/ml (1 : 200; 1  $\mu$ l ad 200  $\mu$ l) => weak staining result
- 10  $\mu$ g/ml (1 : 100; 2  $\mu$ l ad 200  $\mu$ l) => intermediate staining result
- 20  $\mu$ g/ml (1 : 50; 4  $\mu$ l ad 200  $\mu$ l) => intermediate staining result
- 40  $\mu$ g/ml (1 : 25; 8  $\mu$ l ad 200  $\mu$ l) => strong staining result

- Secondary antibody: TexasRed-labelled Donkey anti-mouse IgM, Jackson ImmunoResearch, # 715-075-140 (1.5 mg/ml), dilution 1:200 in incubation buffer.

#### **Protocol:**

##### *Day 1*

- Trypsinize a confluent P19 stem cell line grown in a T25-flask and wash once with PBS. Resuspend the cells in 10 ml fresh culture medium.
- Seed out 10-50  $\mu$ l of the resulting suspension (depending on the desired cell density) onto a DuplexDish 35 (see product information for details) and incubate the cells over night in 1 ml culture medium.

##### *Day 2*

- Remove all medium and wash the cells gently with 1 ml incubation medium.
- Incubate with the primary antibody at the desired dilution in a total volume of 400  $\mu$ l incubation medium for 1 h at 37  $^{\circ}$ C, 5 %  $\text{CO}_2$ .
- Gently wash the cells 3x with incubation buffer.
- Incubate with the secondary antibody labelled with TexasRed in a total volume of 400  $\mu$ l incubation medium for 1 hour at 37  $^{\circ}$ C, 5 %  $\text{CO}_2$ .
- Gently wash the cells 3x with incubation buffer.
- Cover the cells with 1 ml incubation buffer and let them revive for 30 minutes.
- Now the cells are ready for microscopic analysis and laser microdissection.

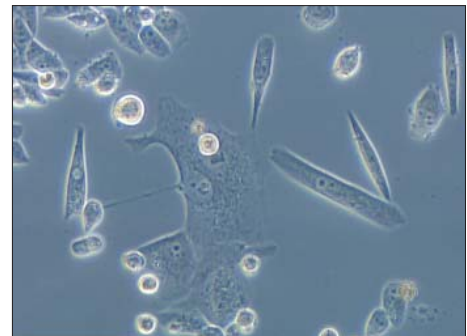
# PALM User Protocols

## Cell Culture, non-contact Laser Capture Microdissection (LCM) and Recultivation

### 2 Improvement of visualization in live cell applications

#### 2.1 Phase contrast

In optical microscopy many objects such as live cells and microorganisms are nearly fully transparent unless stained. Phase contrast microscopy is a type of light microscopy that enhances contrasts of transparent and colorless objects by influencing the optical path of light. Thus, components in cells or bacteria can be shown, which would be very difficult to see without phase contrast. This technique is widely utilized to examine dynamic events in live cells.



*Phase contrast*

#### 2.2 PlasDIC

PlasDIC (DIC=Differential Interference Contrast) is the first DIC method, which allows the use of plastic dishes and membrane coated DuplexDishes for microscopic examinations of unstained live cells.

It provides more information and details about the cells to be examined and allows better visualization of thick cells. PlasDIC is ideal for microdissection or micromanipulation of live cells on the microscope with better depth of focus than conventional differential interference contrast methods.



*Visualization in brightfield...*



*...and in PlasDic*

# PALM User Protocols

## Cell Culture, non-contact Laser Capture Microdissection (LCM) and Recultivation

### 3 Non-contact LCM

Please, additionally refer to the PALM MicroBeam user manual.

#### 3.1 Holders for PALM RoboStage

Cells can be cultivated in DuplexDish 35 and 50, in lumox® dish with appropriate MembraneRing 35 or 50, as well as on FrameSlide PET (please see chapter 1: Sample preparation). Depending on whether dishes or FrameSlides are used DishHolder 35 respectively 50 or SlideHolder 3x1.0 has to be applied. These holders are adapted to the PALM RoboStage II.

#### 3.2 Collection devices

PALM RoboMover, PALM CapMover and LiveCell Collector are collection devices for positioning collection vessels above the sample.

##### 3.2.1 PALM CapMover

For PALM CapMover, SingleCap Collectors for dishes and slides are available. These Collectors are designed to be equipped with 200 µl or 500 µl caps in order to enable the direct lifting of cells from a dish or a slide.

##### 3.2.2 PALM RoboMover

PALM RoboMover is a device for highly automated harvesting and sorting of different kinds of microdissected specimen in a higher throughput process. The non-contact LCM process can be operated automatically or manually, respectively. PALM RoboMover is completely controlled by PALM RoboSoftware and can be equipped with different collectors. Working with LCM dishes, e.g. DuplexDishes, require the use of a SingleCap Collector.

##### 3.2.3 LiveCell Collector

LiveCell Collector (Order No. 415101-2100-310) is designed for harvesting live cells from DuplexDish 50.

Non-contact LCM now can be performed in an entirely enclosed compartment and thus under sterile conditions. Due to optimal humidity conditions time for cell harvesting is elongated.



*LiveCell Collector*



# PALM User Protocols

## Cell Culture, non-contact Laser Capture Microdissection (LCM) and Recultivation

### 3.3 The procedure: Non-contact LCM of live cells

Adherent growing cells are seeded into DuplexDish or lumox® dish combined with MembraneRing and cultivated as usual up to the desired cell density. Usually after 1-2 days the cells are ready for laser microdissection. Cells in suspension have to be attached to the bottom of the dish using an adequate coating depending on the cell type (see 1.2 Preparation of cells in suspension).

#### **Protocol:**

- Please arrange all necessary items for recultivation before starting the non-contact LCM steps to limit the time the cells will stay with minimum amount of medium.
- Before starting laser microdissection excess of medium has to be removed.  
Due to evaporation of the residual medium, time for harvesting of the cells is limited. For example using a SingleCap Collector there are about 15 minutes working time with an open dish.  
Using the LiveCell Collector with a closed DuplexDish 50 more than 30 minutes are available to collect the cells.
- Find optimal laser settings.  
**Please note:** Dish shall be closed for this step.
- For use of LD 20x, LD 40x, or LD 63x objective adapt the working distance to different glass slides or DuplexDish by turning the correction ring on the objective.
- Set Delta Laser Energy (difference between cutting and lifting energy) to 20-40, depending on the objective used and the size of the selected area.
- Adjust cutting speed to a lower level.
- Prepare an appropriate collection vessel, e.g. a sterilized cap of a 500 µl microfuge tube filled with 40 µl of appropriate cell culture medium.
- Place the prepared cap in the LiveCell Collector or in the SingleTube Collector for dishes.
- Center the cap directly above the region of interest.
- Select the cells of interest by any of the software marking tools.
- Start the laser.
- The marked cells or areas are cut together with the underlying membrane and are subsequently lifted by a single laser pulse into the collection vial.
- After non-contact LCM the collected cells can be inspected by moving the RoboStage to the check-point position.



*Regular glass slide (1 mm thick) => 1,  
thin slide (0.17 mm thick) => dot,  
DuplexDish => between dot and 0.*

**Note:** Having adjusted optimal settings even large areas can be harvested easily. Induced by the residual humidity, it may occur that the separated cell areas cannot be lifted with the laser function "RoboLPC". In this case first cut around with the laser function "Close&Cut" and then lift in a second step with the function "LPC". The "LPC-dot", the lifting pulse, should be set into a cell-free region within the outlined area on the membrane.

# PALM User Protocols

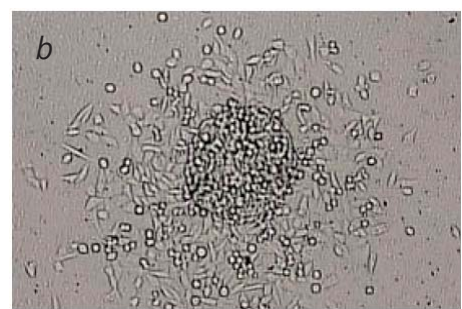
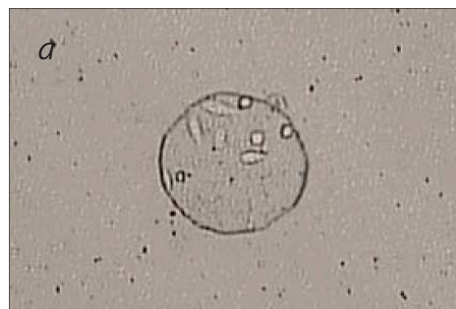
## Cell Culture, non-contact Laser Capture Microdissection (LCM) and Recultivation

### 4 Recultivation of collected live cells – clonal expansion

#### **Protocol:**

- Attach the cap containing the collected cells onto a sterile microfuge tube.
- Spin down immediately at 800 rcf for 2 minutes.
- Transfer the cells with a pipette into e.g. a 24-well culture plate filled with 1 ml medium per well.
- The lifted cells can be also transferred directly from the cap into a culture dish by pipetting, without a centrifugation step. To be sure that all captured cells are transferred, it is advisable to rinse the cap several times.
- Cultivate the cells under usual cell culture conditions. The harvested cells enter the cell cycle and start to proliferate within a few days, depending on cell type and amount of selected cells.
- The originating DuplexDish from which the isolation took place can be put back into the incubator for further experiments.

**Note:** Non-contact LCM has no influence on the viability, the proliferation rate, and the genetic stability of isolated cells. Even frequently recultivated cell colonies are still viable and unaltered after several non-contact LCM isolation procedures.



*a) selected area after transfer to a fresh culture vessel  
b) Clonal expansion of the selected cells*

# PALM User Protocols

## Cell Culture, non-contact Laser Capture Microdissection (LCM) and Recultivation

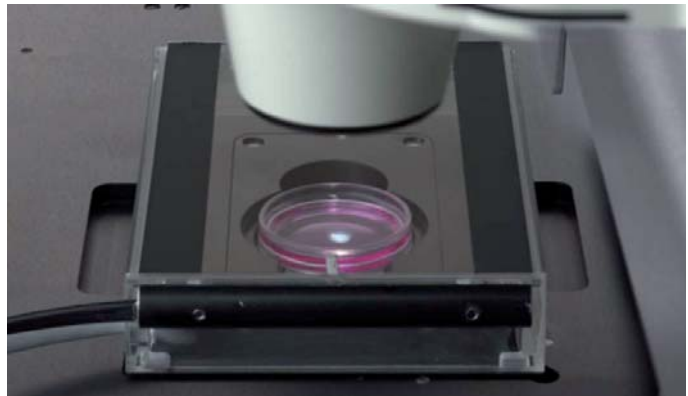
### 5 Time-lapse

With time-lapse photography very slow motions can be observed, e.g. motion of cells in culture, which are unable to view in real time. The images are captured by taking photos from just a few seconds to a minute or more apart, they are put together as a sequence allowing to view the event over a short time period. With the time-lapse function in the PALM RoboSoftware pictures in series or a video sequence can be saved.

### 6 Incubators

#### 6.1 Incubator XL PALM-3 S1

Incubator XL PALM-3 S1 is a heating unit for long-term experiments (e.g. time-lapse) with live cells and organisms, which demand temperature control. It is also a tool for working under clean conditions.



*PALM CombiSystem with Incubator PM PALM S1*

#### 6.2 Incubator PM PALM S1

Incubator PM PALM S1 is an on-stage incubator system enabling temperature control in combination with CO<sub>2</sub> and humidity. Due to a modular design, inserts for regular glass slides or dishes (35 mm / 50 mm) can be loaded into the heated plate. The heated lid stabilizes the temperature of the complete inner volume. Therefore no condensation will occur under humid conditions. The lid provides excellent optical quality to guarantee contrast methods like DIC or PlasDic. For Laser Microdissection you can easily take off the lid without losing track of your objects of interest. Laser Manipulation like optical trapping can now be performed in an enclosed compartment.

### 7 Optical Tweezers and PALM CombiSystem

With PALM MicroTweezers, also known as optical trap, it is possible to catch, hold and move microscopic particles such as beads, cells or even sub-cellular particles in suspension. The high intensity gradient of the focused continuous wave laser causes microscopically small objects in liquid to be trapped and kept within the laser focus by means of radiation pressure forces. Application fields of MicroTweezers are sorting, i.e. picking single cells, bacteria or protozoa out of a bulk or a mixture of different specimen and to separate them, e.g. for subsequent molecular biological analysis. Bringing different species in close contact to each other, or to any nearby surface, and studying cell membrane formation and elasticity is feasible.

The Force Measurement (FM) modul expands this functionality with the quantitative measurement of forces relevant to various disciplines of life science research.

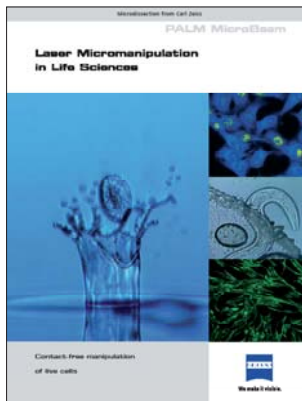
PALM CombiSystem combines the cutting and lifting properties of PALM MicroBeam with trapping and manipulation capabilities of PALM MicroTweezers. Only the forces of light are used to cut, lift, trap, sort or position with high precision.

# PALM User Protocols

## Cell Culture, non-contact Laser Capture Microdissection (LCM) and Recultivation

### Brochures and protocols

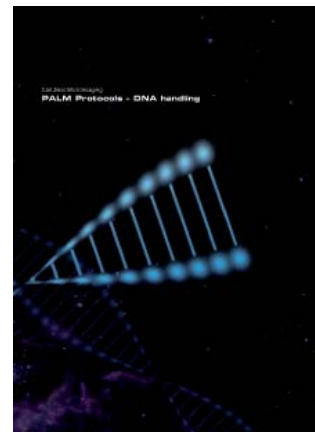
#### Live cells



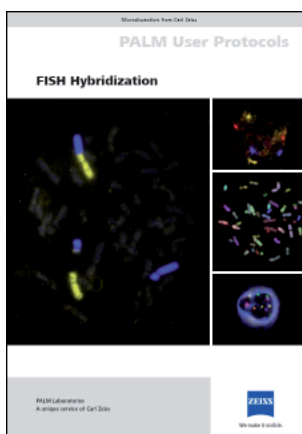
#### Chromosomes



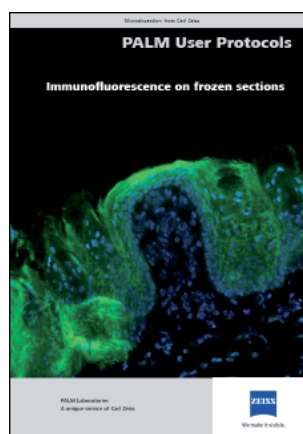
#### DNA



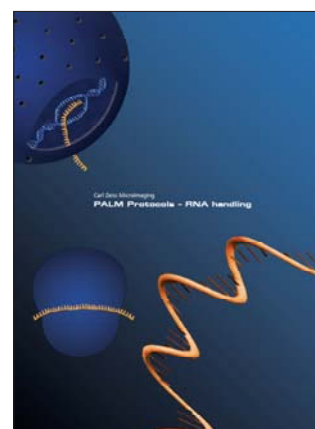
#### FISH



#### Immunofluorescence



#### RNA



For questions, comments or protocol requests please contact:

**ZEISS > ZTC dT aj Labs**

[labs@zeiss.de](mailto:labs@zeiss.de)

+49 89 90 9000 900

# **PALM User Protocols**

**Cell Culture, non-contact Laser Capture  
Microdissection (LCM) and Recultivation**



**Cell Culture, non-contact Laser Capture Microdissection (LCM) and Recultivation**

March 2010

For scientific questions please contact  
[labs@zeiss.de](mailto:labs@zeiss.de)  
[+49 89 90 9000 900](tel:+4989909000900)  
[www.zeiss.de/labs](http://www.zeiss.de/labs)

**Carl Zeiss Microdissection GmbH**  
07744 Jena, Germany

BioSciences  
[+49 89 90 9000 800](tel:+4989909000800)  
[palm-info@zeiss.de](mailto:palm-info@zeiss.de)

[www.zeiss.de/microdissection](http://www.zeiss.de/microdissection)



We make it visible.