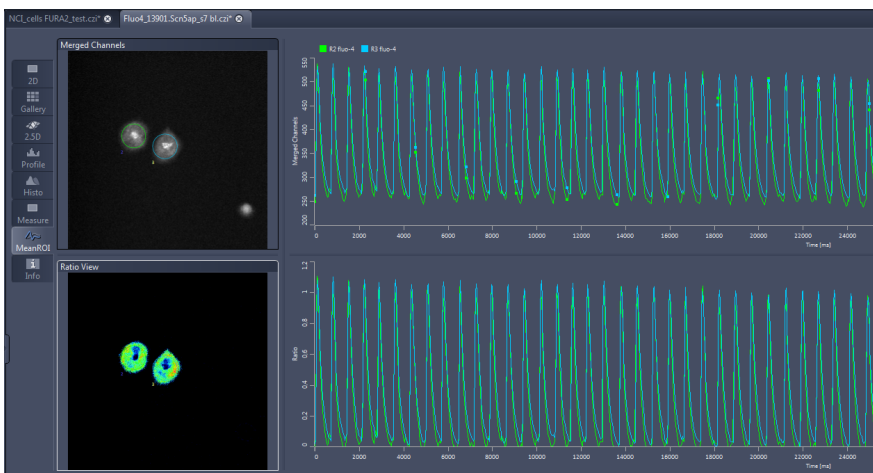


Analyze physiological time series data & acquire full flexibility

Physiology for ZEISS ZEN Imaging Software



Sample image of Flu-4 labeled cells which are stimulated resulting in fast fluctuations in intensity that correspond to rising and falling calcium levels.

Upgrade your ZEISS microscope

Upgrade your ZEISS microscope with the Physiology option and benefit from analyses of physiological time series data.

As technical requirements may apply on some systems, please contact us to learn more about Physiology and how your imaging will benefit from an upgrade: microscopy@zeiss.com

With the Physiology module for ZEISS ZEN Imaging Software, you can analyze physiological time series data, especially to measure fast ion fluctuations. This happens in a fully interactive and flexible manner with advanced charting and analysis functions. Using the Physiology function you specify user-defined measurement regions (ROIs) before the acquisition of your time-lapse experiment and analyze their time-dependent changes in intensity online during acquisition. Ratios can also be calculated and displayed online. Furthermore, you can change acquisition speed and execute predefined hardware settings as appropriate online.

Highlights

Impressive insights

Observe fundamental and delicate parametric changes in ion imaging time-lapse experiments within living cells and tissues

Operation feedback

Receive detailed feedback at every time point of the acquisition which allows you to interact with the data as required

Flexible combination of dimensions

Combine the Physiology module seamlessly with other modalities e.g. triggered acquisition, dual camera, etc.

Full flexibility

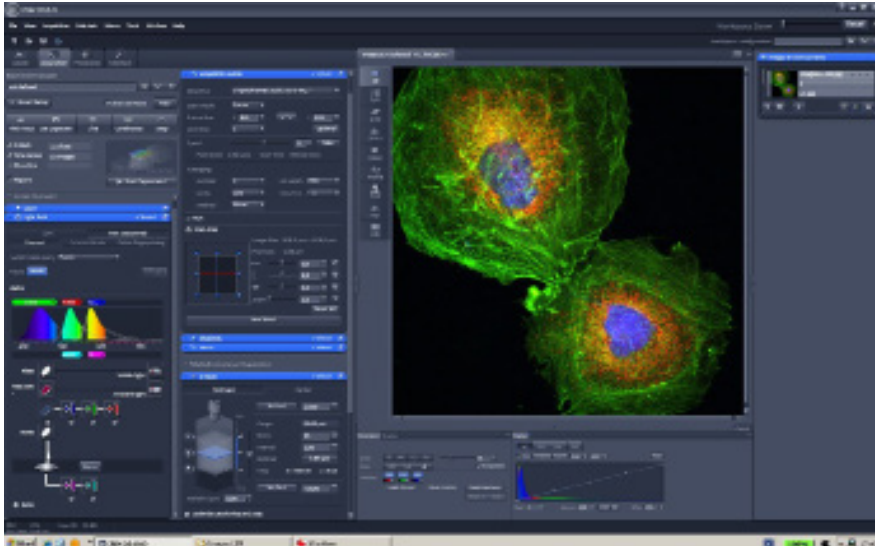
Change your acquisition speed using definable switches and annotate experiment conditions



Seeing beyond

Physiology for ZEISS ZEN Imaging Software

Acquire full flexibility



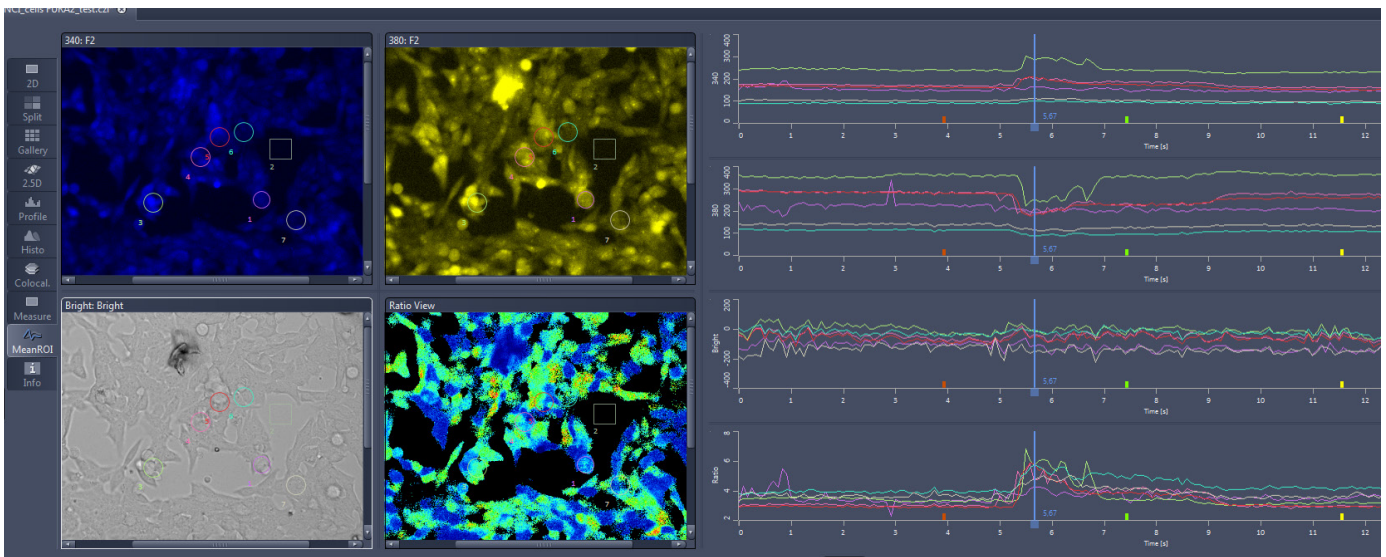
Physiology module for intensity analyses over time; 3D VisArt for 3D rendering of the image stacks.

Availability

The Physiology upgrade is available for the following software:

ZEN pro (blue edition)	<input checked="" type="radio"/>
ZEN desk (blue edition)	<input checked="" type="radio"/>
ZEN desk (black edition)	<input checked="" type="radio"/>
ZEN system (blue edition)	<input checked="" type="radio"/>
ZEN system (black edition)	<input checked="" type="radio"/>
ZEN lite	<input type="radio"/>
ZEN 2 core	<input type="radio"/>
ZEN 2 starter	<input type="radio"/>

Included in ZEN
 Optional in ZEN



The sample image of cells which are load with FURA-2 dye and are imaged sequentially is 340 nm and 380 nm over time. Additionally, the cells are monitored with a bright-field image.

