

SL DATA MANAGER

Efficient management of data in CPF project files

The SL Data Manager provides a versatile user interface for the administration of CPF* databases. The user navigates through tree view of database entries (Fig. 1), e. g. to prepare a working series for model development with SL Calibration Wizard, to configure an application for routine analysis with SL Predictor, or to import and export data.

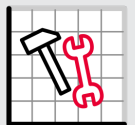
*) CPF: Chemometric Project File



SL products
for your workflow



Data Acquisition



Data Management



Modeling



Routine Analysis

Main functions of SL Data Manager include:

- 1 Managing samples, spectra and property data:
 - Creation, editing and removing of series and libraries
 - Selection of spectra in a series supported by filter options
 - Merging several series or libraries into one series or library
 - Graphical display of spectra, series (Fig. 2) and libraries as well as application of transformations in the graphic
 - View of property histogram for a series
 - Interpolation of spectra series to different data ranges
- 2 Data import to the CPF database: sample property data from Excel, and spectra series from Excel or JCAMP-DX; Import of manual calibrations from Excel
- 3 Data export: spectra series and sample properties to Excel, and spectra series to XML format
- 4 Creation, editing and removing of transformations
- 5 Managing calibrations, methods and applications:
 - Editing and removing of calibrations, methods and applications
 - 'Save as' function for calibrations and methods
 - Calibration export to XML
 - Creation of new applications
 - Adding/Removing methods in applications
 - Creation of a new method from existing calibration
 - Validation/Invalidation of a method

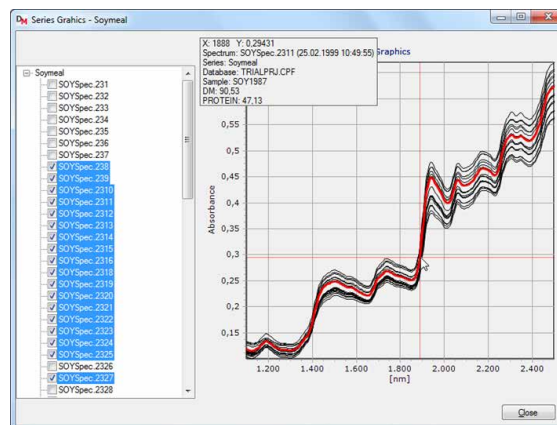


Fig. 2: Series graphics of selected spectra by using point capture system for more sample details

Seriengraphik einer Spektrenauswahl inkl. Fadenkreuz zur Anzeige von weiteren Probeninformationen